

INSTALLATION INSTRUCTIONS FOR THE LOGMATE

Windows XP

1. **DO NOT** connect the Innotech Temperature Logger before installing the LogMate software. This can be downloaded from the internet at the following address:

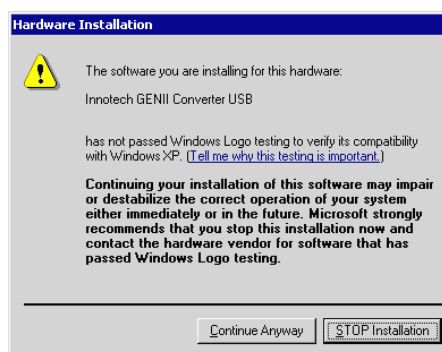
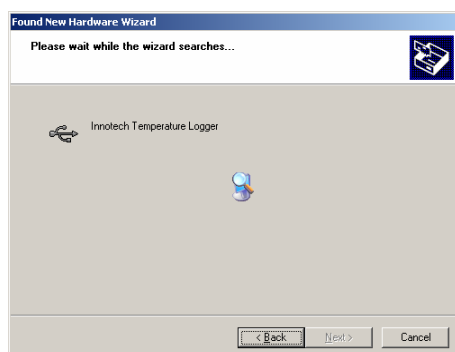
<http://www.innotech.com.au/files/logmate.exe>
2. Follow the on-screen instructions to install the **LogMate** software and USB drivers.
3. Connect the **Innotech Temperature Logger** using the USB cable provided.
4. The device should be automatically detected and the *Found New Hardware Wizard* will launch.
5. Ensure that “**No, not this time**” is checked in the *Found New Hardware Wizard*, and click ‘Next’.



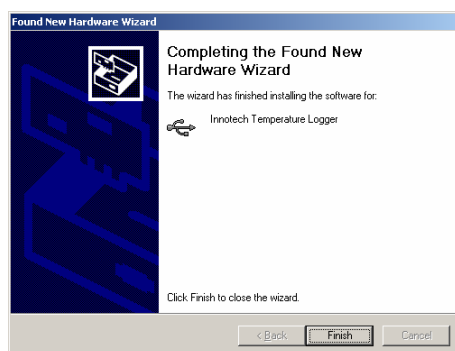
6. Ensure that ‘**Install the software automatically.**’ is selected and choose ‘Next’.



7. Wait for the wizard to find the drivers, and choose 'Next'.
(If a message appears regarding driver signing, choose 'Continue Anyway')



8. Choose 'Finish', then run **LogMate** from the desktop shortcut.



INSTALLATION INSTRUCTIONS FOR THE INNOTECH TEMPERATURE LOGGER

Windows 2000

1. **DO NOT** connect the Innotech Temperature Logger before installing the LogMate software. This can be downloaded from the internet at the following address:

<http://www.innotech.com.au/files/logmate.exe>

2. Follow the on-screen instructions to install the **LogMate** software and USB drivers.
3. Connect the **Innotech Temperature Logger** using the USB cable provided and run **LogMate** from the desktop shortcut.

**If you have any problems installing this software, please call
Innotech support on 07 3841 1388.**