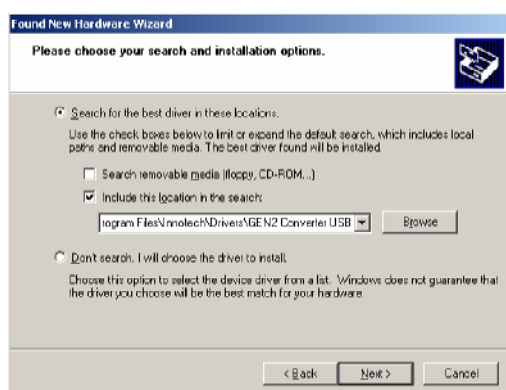


## Installation instructions for the GENII Converter USB for Windows XP

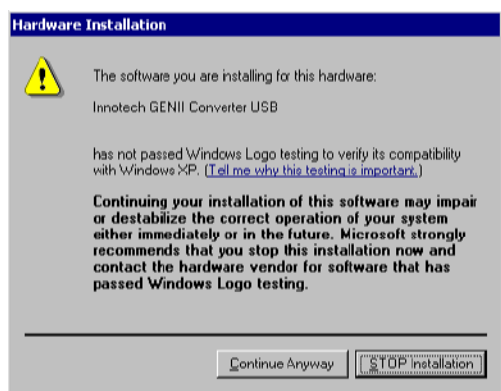
1. **DO NOT** connect the GENII Converter USB before install the software from the 'Driver and Tools Disk'.
2. Insert 'Driver and Tools Disk' in CD-ROM.
3. If CD-ROM does not AutoStart, navigate to the CD-ROM directory and run Setup.exe.
4. Once 'Driver and Tools Disk' is finished installing, remove CD-ROM for drive and **connect GENII Converter USB using USB cable provided.**
5. The device should be automatically detected. A dialog box will appear to proceed with driver installation.



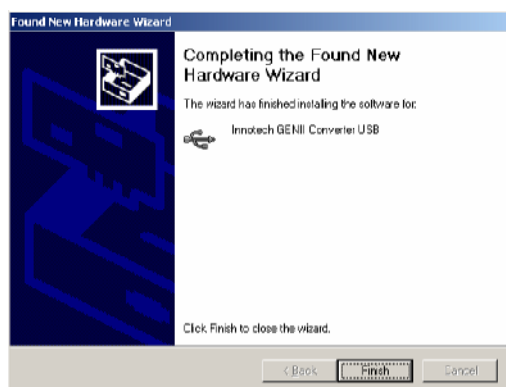
6. Choose 'Install from a list or specific location.' and choose 'Next.'



7. Choose 'Include this location in the search' and enter or browse to the following location:  
C:\Program Files\Innotech\Drivers\Gen2ConverterUSB
8. Choose 'Next.'



9. As the drivers are unsigned, you may be asked if you really want to install them. Choose 'Continue Anyway' if this dialog appears.



10. Choose 'Finish.'

If you have any problems with installing the GENII Converter USB, please call Innotech support on 07 3841 1388.

## Installation instructions for the GENII Converter USB for Windows 98 and Windows 2000

1. **DO NOT** connect the GENII Converter USB before install the software from the 'Driver and Tools Disk'.
2. Insert 'Driver and Tools Disk' in CD-ROM.
3. If CD-ROM does not AutoStart, navigate to the CD-ROM directory and run Setup.exe.
4. Once 'Driver and Tools Disk' is finished installing, remove CD-ROM for drive and **connect GENII Converter USB using USB cable provided.**
5. The device should be automatically detected. A dialog box will appear to proceed with driver installation.



6. Choose 'Next.'



7. Ensure that 'Search for the best driver for your device.' is selected and choose 'Next.'



8. Choose 'Specify location' and enter or browse to the following location:  
C:\Program Files\Innotech\Drivers\Gen2ConverterUSB
9. Choose 'Next.'



10. Choose 'Next.'



11. Choose 'Finish.'

If you have any problems with installing the GENII Converter USB, please call Innotech support on 07 3841 1388.