

Innotech Magellan

USER INSTRUCTIONS



Proprietary

No part of this technical manual may be reproduced, transmitted, transcribed, stored in a retrieval system, or translated into any language or computer language, in any form or by any means, without prior written permission of Mass Electronics Pty Ltd.

Trademark

The term 'Innotech' used in this manual is a trademark of Mass Electronics Pty Ltd trading as Innotech Control Systems Australia.

'Microsoft' and 'Windows' are registered trademarks of Microsoft Corporation in the United States and other countries.

Disclaimer

While great efforts have been made to assure the accuracy and clarity of this document, Mass Electronics Pty Ltd assumes no liability resulting from any omissions in this document, or from misuse of the information obtained herein. The information in this document has been carefully checked and is believed to be entirely reliable with all of the necessary information included. Mass Electronics Pty Ltd reserves the right to make changes to any products described herein to improve reliability, function or design, and reserves the right to revise this document and make changes from time to time in content hereof with no obligation to notify any persons of revisions or changes. Mass Electronics Pty Ltd does not assume any liability arising out of the application or any use of any product or circuit described herein; neither does it convey licence under its patent rights or the rights of others.

Document Management

Document Title: Innotech Magellan User Instructions

Revision History

Version Number	Date	Summary of Changes
1.0	November 2019	Document first edition.

Contents

Proprietary	2
Trademark.....	2
Disclaimer	2
Document Management.....	3
Overview	5
About this Manual	5
Information Icons	5
Description of Innotech Magellan.....	6
Innotech Magellan Installation	7
Innotech Magellan Usage	10
Add and Connect to a Server	10
Delete a Server Connection	10
Return to the Connections List and Closing Innotech Magellan	11
Customer Assistance	11
Innotech Support	11

Overview

This manual is designed to provide the customer with complete documentation for installing and using Innotech Magellan in a Microsoft Windows environment.

About this Manual

This manual provides the user with complete and easy-to-follow instructions for installation and usage of Innotech Magellan. In preparing these instructions, Innotech assumed that the typical operator is not necessarily familiar with the operation of processor (computer) systems. For this reason the procedures are presented at a technically basic level and as clearly as possible.



References made throughout this manual to "Magellan" refer to the Innotech Magellan software.

Information Icons

Throughout this manual, icons are used to illustrate important notes. Examples are shown below.



These notices indicate a piece of useful information which should be read.



IMPORTANT

*These notices contain information about the software that **must be done** before proceeding further to ensure success.*

Description of Innotech Magellan

Magellan is an event-driven, object oriented real-time Supervisory Control and Data Acquisition (SCADA) package. It provides a simple, intuitive mechanism to effortlessly design either simple or sophisticated supervisory and control programs using a drag-and-drop approach.

Innotech Magellan is a standalone runtime-only client for the end user to access Magellan Server projects created by Magellan Builder.

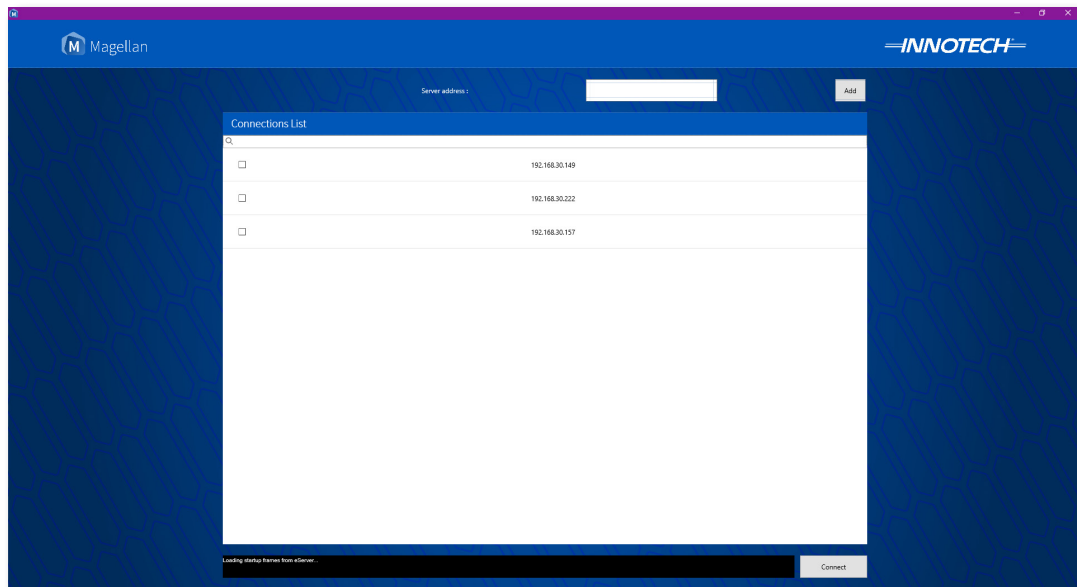


Figure 1: Innotech Magellan Window

Innotech Magellan Installation

After downloading the Innotech Magellan installation file, follow these steps to successfully install Innotech Magellan.

1. Double click the setup file to start the install program.
2. Click Next to begin installation of the Innotech Magellan.

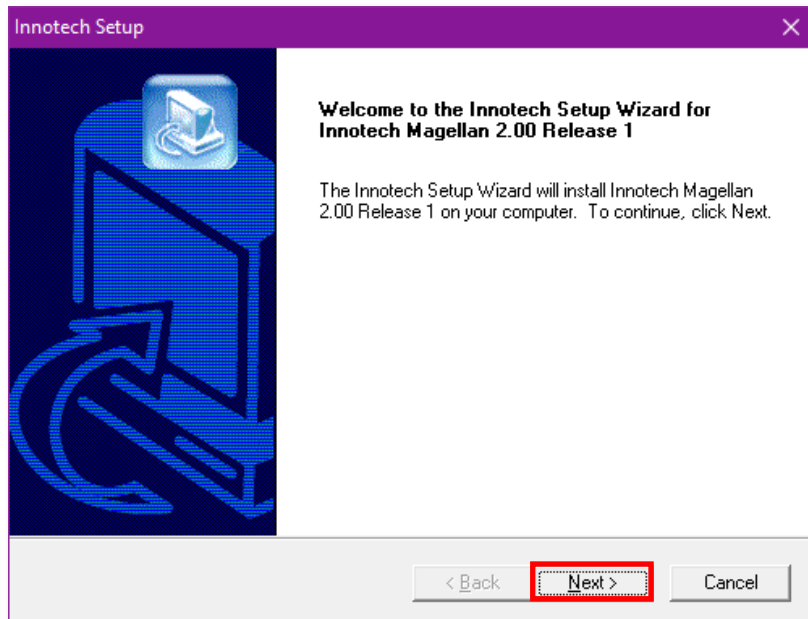


Figure 2: Innotech Magellan Installation Window

3. Read the Licence Agreement.
4. Click Yes to accept the agreement.

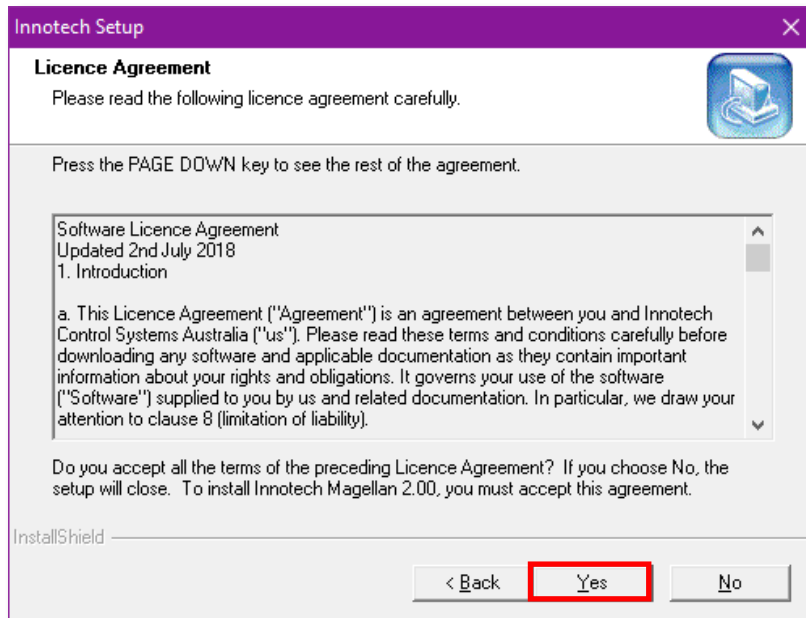


Figure 3: Innotech Magellan Installation Licence Agreement



IMPORTANT

If you do not accept the licence agreement, you will not be able to continue with the installation of the software.

5. Enter your User Name and Company Name.
6. Click Next to continue.

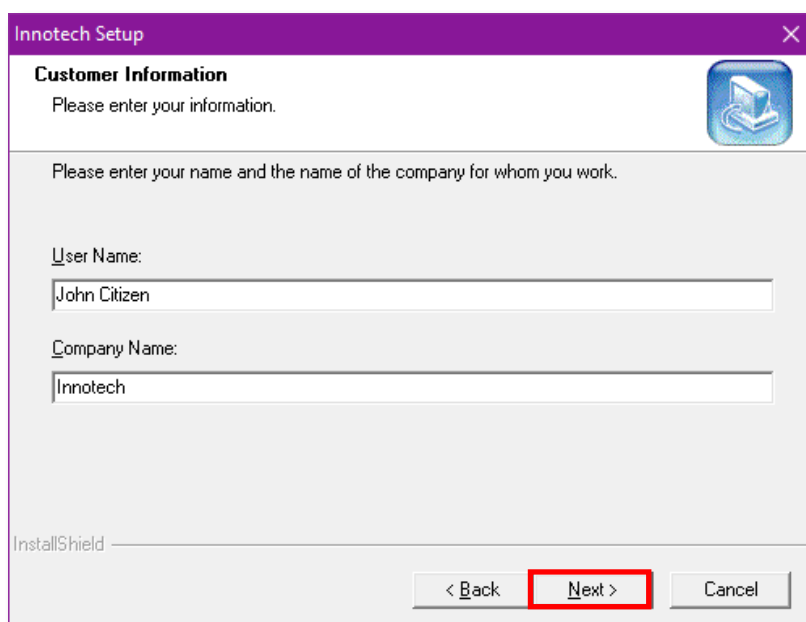


Figure 4: Innotech Magellan Installation Customer Information

7. The Innotech Magellan installation location is preset by default. Click Next to continue, the file installation will proceed.

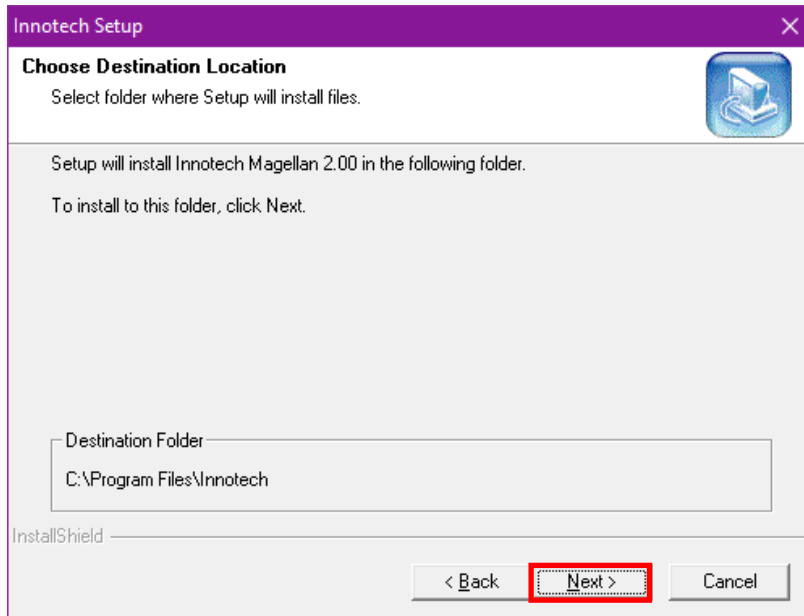


Figure 5: Innotech Magellan Installation Location

8. The Innotech Magellan Installation is complete. Click Finish to complete the Installation process.

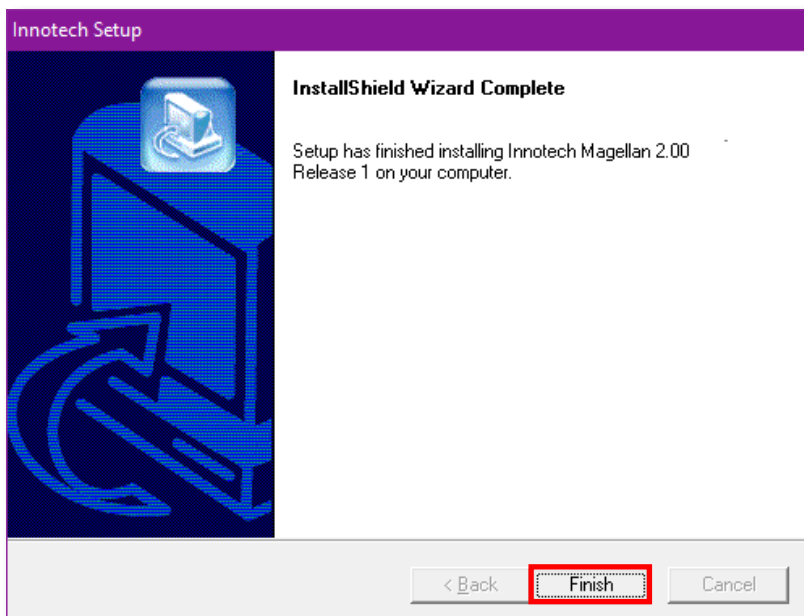


Figure 6: Innotech Magellan Installation Complete

Innotech Magellan Usage

Innotech Magellan has a simple user interface consisting of two buttons, a server address entry field and a connections list.

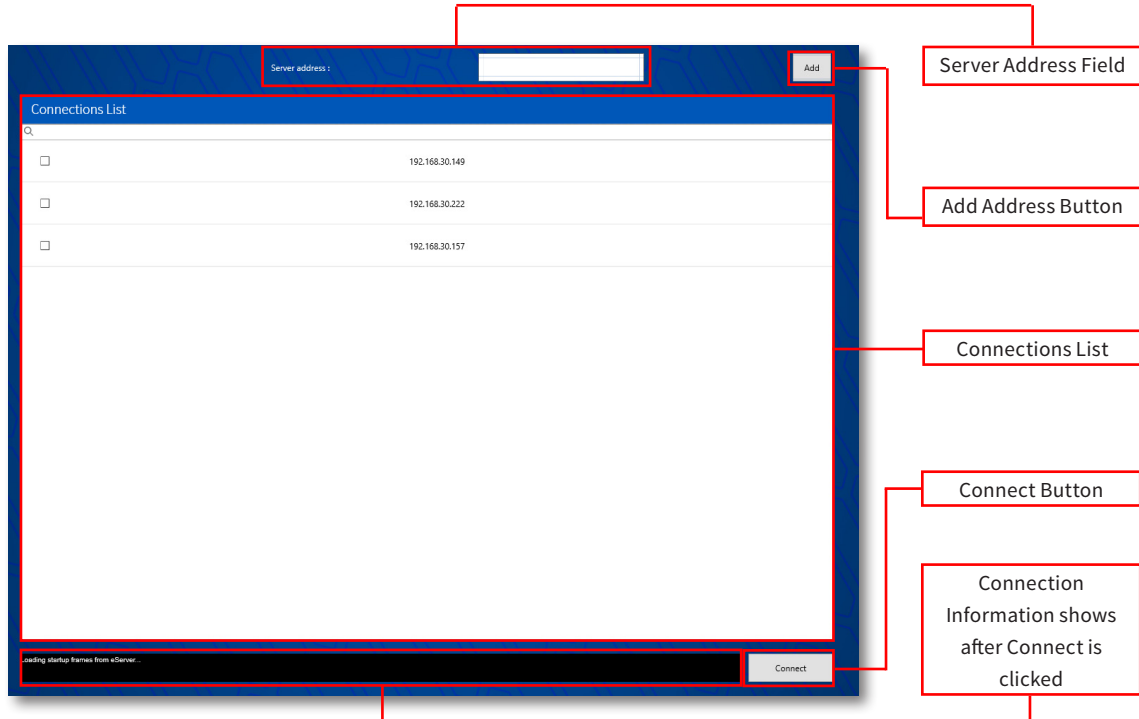


Figure 7: Innotech Magellan Window Description

Add and Connect to a Server

1. Enter an address in the Server Address field, this can be an IP or DNS address and click the Add button. Use **localhost** as the address for Magellan Server projects running on the same server.
2. Click to select an item in the connections list.
3. Click the Connect button to connect to the server. The Connection Information dialog will display.



Tick the box at the left end of the selected row in the connections list to automatically load the server project next time Innotech Magellan is started.

Delete a Server Connection

Select an item in the Connections List and click the Delete button at the right of the row.

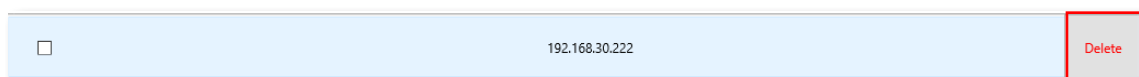


Figure 8: Delete a Connection

Return to the Connections List and Closing Innotech Magellan

- Return to the Connections List - Click an "Exit" button from within the running project to return to the connections list.
- Closing Innotech Magellan - if the project is running in fullscreen mode, press F11 and then click the close button in the top right of the Innotech Magellan window.

Innotech Support

Innotech provides technical information on the Web to assist you with using its products.

At www.innotech.com, you can find technical manuals, user instructions, and data sheets for all our products.

For direct product support or product information, contact your local distributor, or an Innotech representative.

You can contact us via email, phone, or postal mail:

Website: www.innotech.com
Email: sales@innotech.com
Phone: +61 7 3421 9100
Mail: Innotech Control Systems
PO BOX 292
Sunnybank
QLD 4109
Australia