

24V WALL MOUNTED ELECTRONIC CONTROLLER

Model: IWP4011

1 HEAT 1 COOL 2* 0-10V DC OUTPUTS

Model: IWP4022

2 HEAT 2 COOL 2* 0-10V DC OUTPUTS

SPECIFICATIONS:

POWER SUPPLY:

Voltage: 4000 Series 24V AC $\pm 10\%$ 50/60Hz.

OUTPUTS:

One SPDT voltage free contacts per stage 2 amps max.

Two 0-10V DC control outputs heat and cool.

TERMINAL IDENTIFICATION:

SENSOR

S = Screened cable + detector.

DET = Detector.

MODULATING OUTPUTS -

7 = Cool 0-10VDC.

8 = Heat 0-10VDC.

9 = Signal Common.

SUPPLY -

4000 Series:

\equiv = Earth.

\sim = 0V.

24V = 24VAC.

TEMPERATURE RATINGS:

Storage 0 to 50°C non condensing.

Operating 0 to 40°C non condensing.

ENCLOSURE:

Manufactured from an ignition resistant grade of ABS which meets the requirements of AS2420.

Colour: Off White.

INSTALLATION:

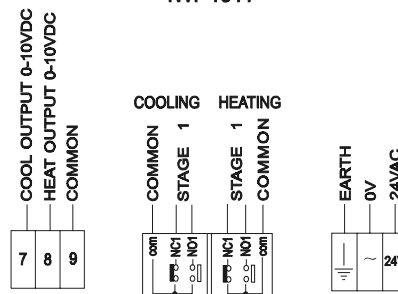
- 1 Mount controller in a dry and reasonably clean location free of excessive vibration.
- 2 Wire in accordance with INNOTECH connection diagrams and local bylaws or refer to your local distributor.

DETECTOR WIRING:

- 1 **DO NOT** connect 24V AC or 240V AC to "SENSOR" terminals or terminals 7 & 8.
- 2 Shielded cable should be used. This shield should remain continuous from the detector to terminal "S" of the controller.
- 3 The screen of the detector wiring **MUST** be connected to the right hand connection "S" of the "SENSOR" terminals.
- 4 It is good practice to maintain at least 50 millimetres clearance between detector wiring and power wiring.

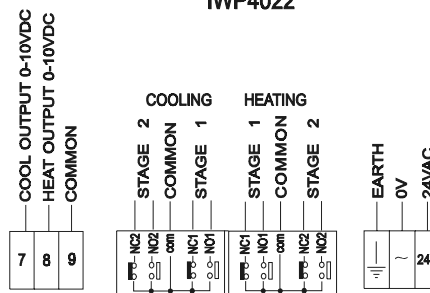
The internal or external detector is calibrated via the "CAL" pot.

STANDARD CONNECTION IWP4011



* Note : Terminal 9 and Earth are Internally Connected.

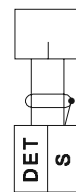
STANDARD CONNECTION IWP4022



* Note : Terminal 9 and Earth are Internally Connected.

REMOTE DETECTOR CONNECTION

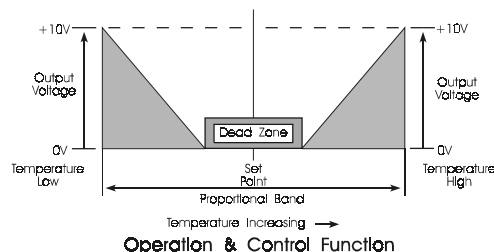
SEN



SENSOR

DET - DETECTOR S - CABLE SCREEN
SCREEN CABLE MUST BE USED

#NB - REMOVE THERMISTOR FROM TERMINAL STRIP



INNOTECH
CONTROL SYSTEMS

Designed & Manufactured In Australia
by Mass Electronics Brisbane
Ph 07 38411388 Fax 07 38411644

TITLE

ELECTRONIC CONTROLLER

MODEL NO

IWP 4011, IWP4022

DATE

22-4-99

DRAWN

LAW

REV NO: B

CONIWR/CDR

APPROVED

m. J. ...