

ECOSTAT 3 CONTROLLER

ES3-6 3 Speed Fan, 1 Cool & 1 Heat Controller

SPECIFICATIONS

SETPOINT ADJUSTMENT RANGE

The Ecostat is calibrated to provide control station setpoint adjustment of 23°C +/- 3°C.

To alter the range, adjust the potentiometer "SSP" located on the controller. When adjusted fully clockwise the range is 23°C +/- 6°C. When adjusted fully counter clockwise the range is 23°C +/- 0.5°C.

To change the midpoint from 23°C adjust the potentiometer "CAL" located on the controller. If for example a midpoint of 21°C is required, set the control station setpoint adjuster to midpoint when the temperature at the temperature sensor equals 21°C. (Note: It may be necessary to heat or cool the room to the desired value). Adjust the "CAL" potentiometer until the control is neither Heating or Cooling.

REVERSE CYCLE UNITS

The Ecostat has a link "REV" located on the controller.

When the link is open the heat and cool relays operate independently of each other. (This is the factory setting).

When the link is closed the cool relay now controls the compressor in both cooling and heating operations. The heat relay operates the reversing valve so on a heating operation both relays will operate together.

SUPPLY FAN RUN ON

If the Ecostat is operating in heating and it is turned off at the control station the supply fan will continue to run for 90 seconds in low speed but the fan speed LED's will be off. The fan LED on the controller will remain on for the fan run on period. This is to remove any residual heat where electric heater elements are used. (Note: The supply fan run on time is not adjustable).

STANDBY FUNCTION

The Ecostat is equipped with a standby function which when enabled will increase the Dead Zone to be 2 times the proportional band setting. For example, if the proportional band is 2° the Dead Zone will be 4°C when the unit is in standby mode. To disable this function remove shunt "S" located on the controller near the dead zone pot.

REMOTE DISABLE

The Ecostat is equipped with a remote disable function. If the Remote Disable Switch is opened, the Ecostat will run for 30 seconds and shut down the Air-conditioning Unit. When the Remote Disable Switch is closed, the unit will start after 1 second.

To disable this function, remove shunt "D" located on the controller near the dead zone pot.

COMPRESSOR TIME DELAY

The Ecostat has a compressor restart timer function. The factory setting is 180 seconds.

When the compressor cycles off, it must remain off for 120 seconds before it can attempt to restart.

To alter the restart time adjust the potentiometer "TIME" located on the controller. When adjusted fully clockwise the delay is 4 minutes 15 seconds. When adjusted fully counter clockwise the delay is 1 second.

PROPORTIONAL BAND

The proportional band factory setting is 2°C, this results in a differential of 1°C for heating and 1°C for cooling.

To alter the proportional band adjust the potentiometer "PB" located on the controller. When adjusted fully clockwise the proportional band is 10°C. When adjusted fully counter clockwise the proportional band is 1°C.

DEAD ZONE

The dead zone is factory set to 50%. This represents 50% of the proportional band setting. If the proportional band is 2°C the dead zone will be 1°C.

To alter the dead zone adjust the potentiometer "DZ" located on the controller. When adjusted fully clockwise the dead zone is 60% of the proportional band. When adjusted fully counter clockwise the dead zone is 0% of the proportional band.

INNOTECH®

Innovative technology

Australian Owned, Designed & Manufactured
by Mass Electronics Brisbane

Phone: + 61 7 3841 1388 Fax: + 61 7 3841 1644

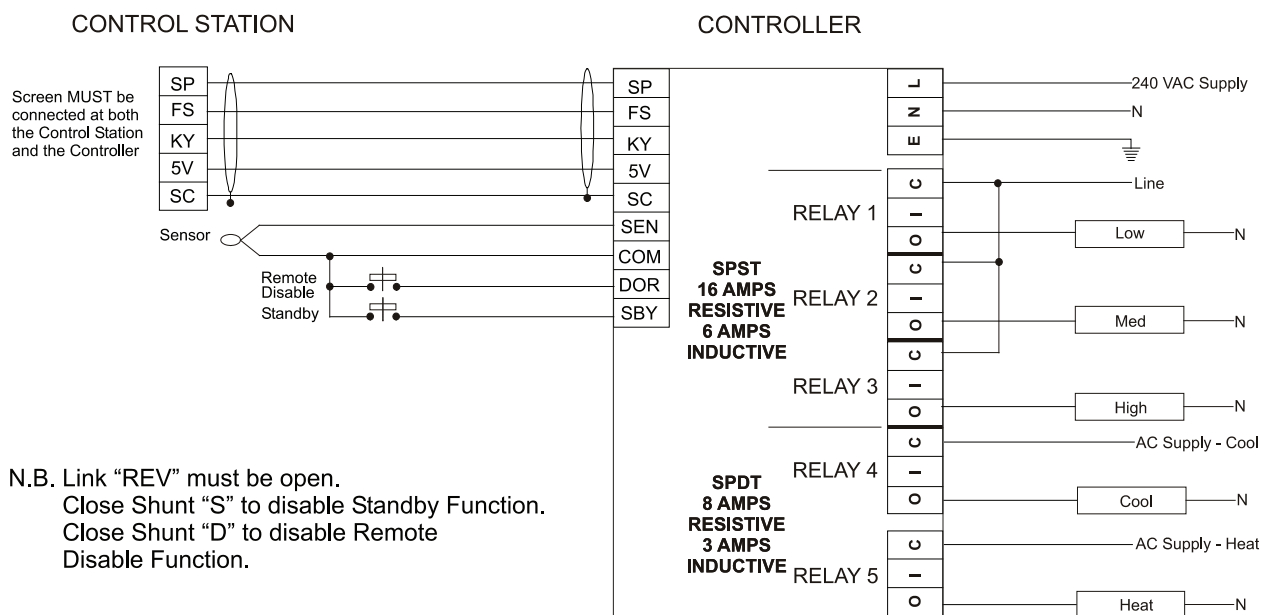
Email: sales@innotech.com.au www.innotech.com.au

TITLE	ECOSTAT 3-6 CONTROLLER
MODEL NO	ES3-6
DATE	07-12-09
DRAWN	CRG REV NO: C
APPROVED	

ECOSTAT 3 CONTROLLER

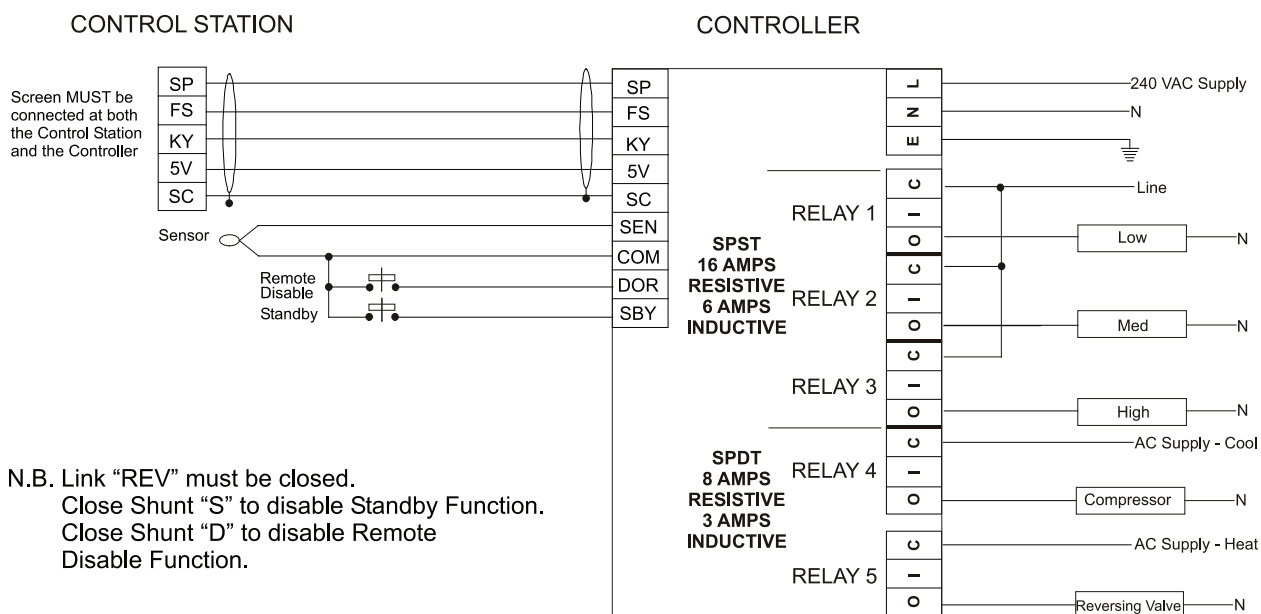
ES3-6 3 Speed Fan, 1 Cool & 1 Heat Controller

STANDARD CONNECTION



* MAXIMUM CABLE LENGTH BETWEEN THE CONTROL STATION & CONTROLLER IS 15 METRES.

REVERSING VALVE FOR HEAT CONNECTION



* MAXIMUM CABLE LENGTH BETWEEN THE CONTROL STATION & CONTROLLER IS 15 METRES.

INNOTECH®

Innovative technology

Australian Owned, Designed & Manufactured
by Mass Electronics Brisbane

Phone: + 61 7 3841 1388 Fax: + 61 7 3841 1644

Email: sales@innotech.com.au www.innotech.com.au

TITLE

ECOSTAT 3-6 CONTROLLER

MODEL NO

ES3-6

DATE

07-12-09

DRAWN

CRG

REV NO: C

APPROVED


m. J. J.

USER INSTRUCTIONS


ES3-6



The Ecostat provides control of the air conditioning.

The  button will switch the air conditioning on or off.

The Ecostat will provide temperature adjustment from 20°C to 26°C

The  button will switch the fan mode between high, medium and low speed.

INNOTECH®
Innovative technology

Australian Owned, Designed & Manufactured
by Mass Electronics Brisbane

Phone: + 61 7 3841 1388 Fax: + 61 7 3841 1644

Email: sales@innotech.com.au www.innotech.com.au

TITLE	ECOSTAT 3 CONTROLLER	
MODEL NO	ES3-6	
DATE	05-04-00	
DRAWN	MEK	REV NO: A
APPROVED	