



Supervisor Plus

Advanced Monitoring Utility for the Genesis and MAXIM Controllers

Overview

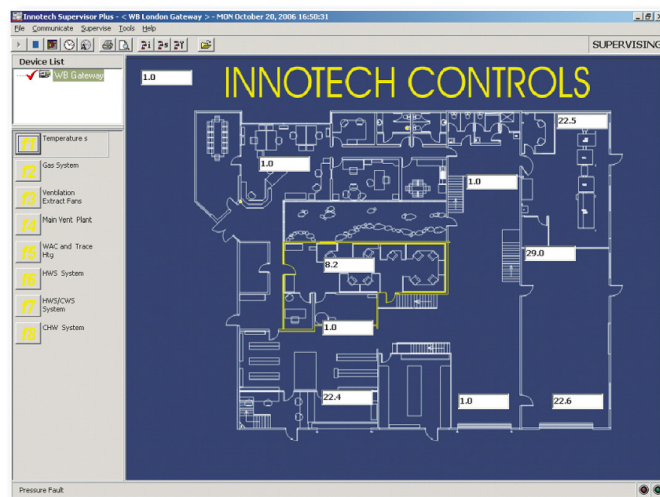
Supervisor Plus is specialised and dynamic monitoring software for the Genesis and MAXIM family of controllers. It provides all the functionality that is available from the HMI of the controller with greater ease-of-use and flexibility. It is aimed at those users who require some feedback or control of the system, but do not want to be immersed in the technical details of the configuration.

Supervisor Plus is user-oriented software; no specialised knowledge of either the Genesis or MAXIM controllers is required to use it. It allows the user to view the values of points of interest on a controller, change its schedule information, or modify values that are accessible to the user.

Supervisor Plus allows the user to change the way the 'watch' items are displayed. Information is personalised and easy to understand. The user can set background images, arrange the watch items around the page and customise the fonts used.

Features

- 'Watch' value status and modification
- Daily schedule viewing and modification
- Weekly schedule viewing and modification
- Yearly (exception) schedule viewing and modification
- Change date and time
- Change daylight savings parameters
- View of Genesis or MAXIM controller flash pages
- Basic alarm notification via pop up window
- User-level security
- Full support for dial-in remote access via a modem or network connection
- Uses disk caching to speed up transfers to and from the Genesis or MAXIM family device
- Some user configuration is available, but no programming is required as information is pre-configured on a device or controller
- Easy to use interface, no special training required
- Comprehensive on-line help and user documentation
- Disk caching to speed up transfers to and from the Genesis or MAXIM controllers
- No programming required - use information pre-configured on a controller
- Easy to use interface - no special training required
- Comprehensive on-line help and user documentation



Applications

- Monitoring values and points on either a Genesis or MAXIM family device
- Modifying daily, weekly or yearly schedules on a device
- Modifying values accessible to the user (e.g. set points, timers, etc.)
- Monitoring alarm conditions on a device
- Customising the display of watch values
- Network testing of a device network
- Modifying the date and time on a device
- Monitoring daylight savings parameters on a device

Supported Operating Systems:

- Windows® 7 Professional 64-bit & 32-bit
- Windows® XP Professional 32-bit with Service Pack 3

Minimum System Requirements:

- Intel® Pentium® 2.8GHz dual core processor or equivalent
- 2GB of RAM
- 80GB Hard Disk Drive
- 1024 x 768 display with 16-bit video card
- CD-ROM or DVD-ROM drive
- Keyboard and Microsoft® mouse or compatible pointing device
- Requires a computer with iComm software installed

Watch Page Supervision

When a configuration is initially setup using either Gen2Config or MAXCon, an output node of any block can have a 'watch' value attached, displaying the current value of the block's output node. In most cases this will be a read-only status value informing the user about data like sensor readings or the status of equipment. These values are continually updated while you use Supervisor Plus. 'Watch' values may also be attached to user variable blocks, meaning the user can modify values, which are then sent immediately to the device for processing. This is very useful for adjusting values like temperature setpoints, or for controlling machinery attached to a controller.

Please refer to the table below for limits on the number of 'watch' pages and 'watch' items available on different devices.

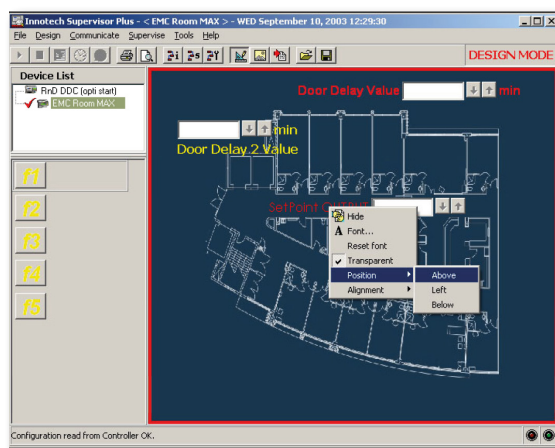
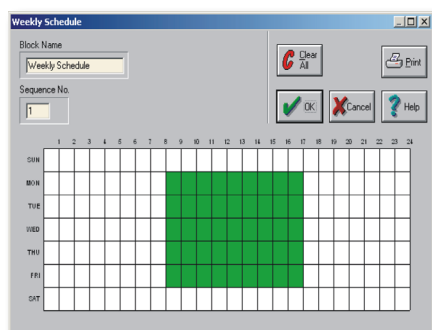
Watch Page Supervision

Controller Details				
Controller	Watch Pages			
	Version	Pages	Watches Per Page	Flash Page
Genesis II	>=6.00	8	32	32
Genesis II	<6.00	8	16	16
Maxim III	All	8	10	10
Maxim II	All	5	5	5
Maxim I	All	5	5	5
MiniMAX MM01	All	5	5	5

In *Supervisor Plus* you can place a background image on each 'watch' page, and position the 'watch' items around the page to customize the way information is presented. If your watch items are for set points in different areas of an office, you can use a simple floor plan to represent the office, and locate each set point in the right area, as shown in the top right image!

Schedule Supervision

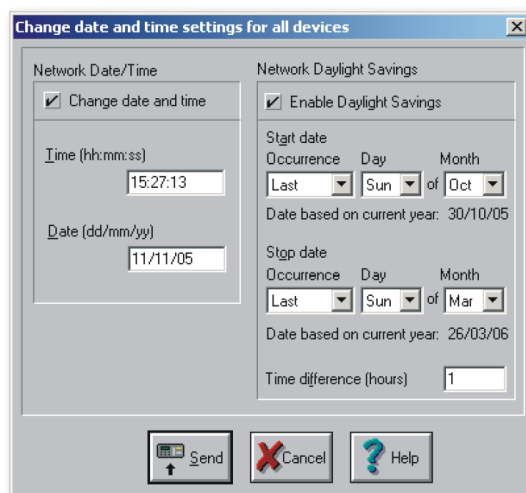
Many configurations include daily, weekly or yearly schedule blocks that periodically require review and modification. The Schedule Supervisor provides a graphical representation of each of the schedules, which makes them very easy to read and maintain. Modifying or adding new schedules is simple with Supervisor Plus, with the process being similar to managing schedules with the *Gen2Config* or *MAXCon* software.



Changing the Date and Time

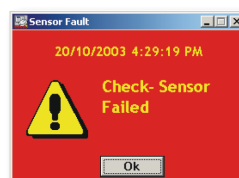
The date and time settings, including daylight savings information can be easily modified.

Note that the date/time and daylight savings settings can be changed on all devices on the network at the same time.



Alarms

Supervisor Plus provides easy alarm monitoring to alert you to any active alarms with a flashing and beeping popup window. You can fully customize alarm notifications to suit your requirements by turning them ON or OFF. You can also modify the notification method. All alarm messages are shown in the status bar for each device currently monitored.



INNOTECH®

Australian Owned, Designed & Manufactured
by Mass Electronics Brisbane

Phone: +61 7 3421 9100 Fax: +61 7 3421 9101
Email: sales@innotech.com.au www.innotech.com.au

YOUR DISTRIBUTOR