



Simulator Manager

Simulator Manager for Genesis II and MAXIM Series Controllers

Overview

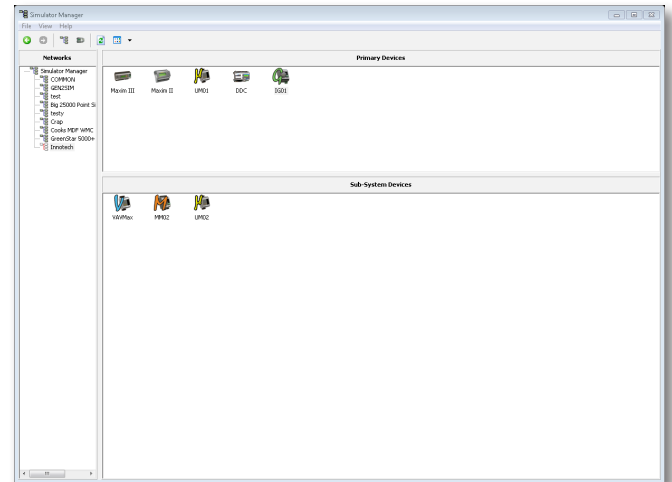
Simulator Manager is Windows® based software which allows you to easily and quickly create a diverse network of Genesis II or MAXIM Series controller simulators.

The simulators can be powered on, powered off or started and shutdown from the **Simulator Manager** interface. You can also change the name and address of each simulator.

Simulator Manager can be used in conjunction with any product from the Innotech® software range.

Features

- Simulator network creation and deletion
- Genesis II and MAXIM series simulator creation and deletion
- Simulator state monitoring
- Name and address modification for all simulators
- Easy to use interface - no special training required
- Test Global Network



Applications

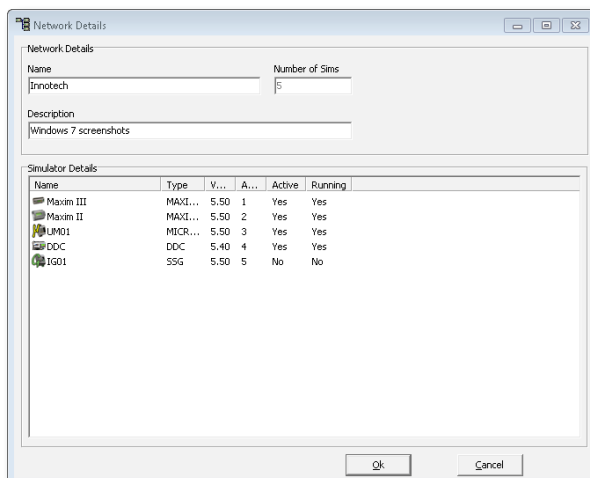
- Designing and testing networks of configurations within a Windows environment

Supported Operating Systems:

- Windows® 7 Professional 64-bit & 32-bit
- Windows® XP Professional 32-bit with Service Pack 3

Minimum System Requirements:

- Intel® Pentium® 2.8GHz dual core processor or equivalent
- 2GB of RAM
- 80GB Hard Disk Drive
- 1024 x 768 display with 16-bit video card
- CD-ROM or DVD-ROM drive
- Keyboard and Microsoft® mouse or compatible pointing device
- Requires a computer with iComm software installed



This page has been left intentionally blank.

INNOTECH®

Australian Owned, Designed & Manufactured
by Mass Electronics Brisbane

Phone: +61 7 3421 9100 **Fax:** +61 7 3421 9101
Email: sales@innotech.com.au www.innotech.com.au

YOUR DISTRIBUTOR