



MiniMAX Simulator

MiniMAX Controller Software Simulator

Overview

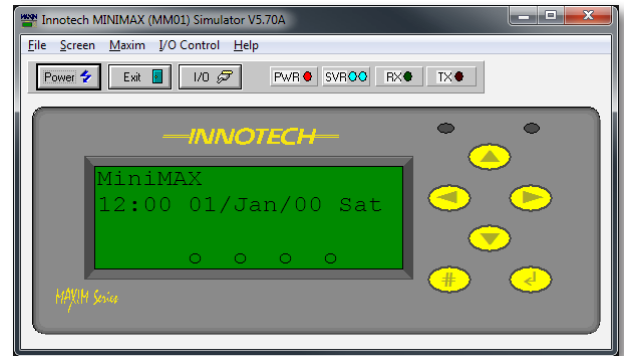
MiniMAX Simulator is Windows® based software that simulates an Innotech MiniMAX Controller.

The virtual MiniMAX can be powered on, configured, and interrogated in the same way as a physical MiniMAX controller. Configurations can be downloaded and checked without requiring any hardware installation.

MiniMAX Simulator can be used in conjunction with any product from the MAXIM software range.

Features

- MAXIM front panel simulation of MiniMAX device Giving visual representation of internal HMI with all interrogation capabilities
- Simulation of MiniMAX occurs as follows:
 - a. MM01 on a Primary Innotech Network
 - b. MM02 on a Sub System Network managed by a Sub System Gateway simulator
- I/O monitoring and control
- Transparent support for all Innotech MAXIM software packages
- Easy to use interface - no special training required



Applications

- Designing and testing configurations within a Windows environment
- Training aid for both the use of MAXIM software and the Human Machine Interface (HMI)

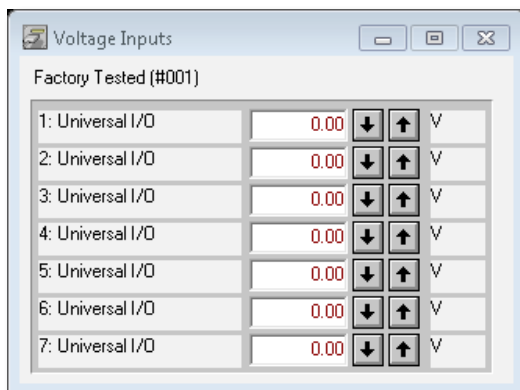
Specifications

Supported Operating Systems:

- Windows® 7 Professional 64-bit & 32-bit
- Windows® XP Professional 32-bit with Service Pack 3

Minimum System Requirements:

- Intel® Pentium® 2.8GHz dual core processor or equivalent
- 2GB of RAM
- 80GB Hard Disk Drive
- 1024 x 768 display with 16-bit video card
- CD-ROM or DVD-ROM drive
- Keyboard and Microsoft® mouse or compatible pointing device
- Requires a computer with iComm software installed



This page has been left intentionally blank.

INNOTECH®

Australian Owned, Designed & Manufactured
by Mass Electronics Brisbane

Phone: +61 7 3421 9100 **Fax:** +61 7 3421 9101
Email: sales@innotech.com.au www.innotech.com.au

YOUR DISTRIBUTOR