



## MicroMAX Simulator

## MicroMAX Controller Software Simulator

### Overview

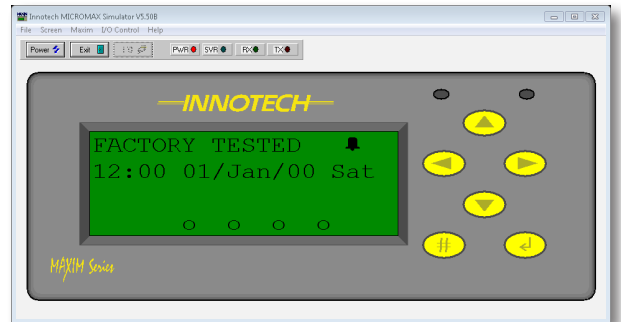
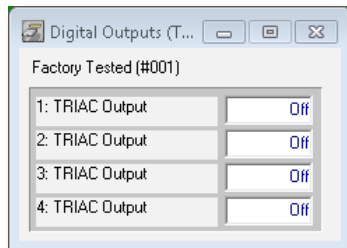
**MicroMAX Simulator** is Windows<sup>®</sup> based software that simulates an Innotech MicroMAX Controller.

The Virtual MicroMAX can be powered on, configured and interrogated in the same way as a physical MicroMAX. Configurations can be downloaded and checked without requiring any hardware installation.

**MicroMAX Simulator** can be used in conjunction with any product from the MAXIM software range.

### Features

- MAXIM front panel simulation of a MicroMAX device providing a visual representation of the internal HMI with full interrogation capabilities
- Simulation of MicroMAX processing as a controller:
  - a. on a Primary Innotech Network
  - b. on a Sub System Network managed by a Sub System Gateway simulator
- I/O monitoring and control
- Transparent support for all Innotech MAXIM software packages
- Easy to use interface - no special training required



### Applications

- Designing and testing configurations within a Windows environment
- Training aid for both the use of MAXIM software and the Human Machine Interface (HMI)

### Specifications

#### Supported Operating Systems:

- Windows<sup>®</sup> 7 Professional 64-bit & 32-bit
- Windows<sup>®</sup> XP Professional 32-bit with Service Pack 3

#### Minimum System Requirements:

- Intel<sup>®</sup> Pentium<sup>®</sup> 2.8GHz dual core processor or equivalent
- 2GB of RAM
- 80GB Hard Disk Drive
- 1024 x 768 display with 16-bit video card
- CD-ROM or DVD-ROM drive
- Keyboard and Microsoft<sup>®</sup> mouse or compatible pointing device
- Requires a computer with iComm software installed

This page has been left intentionally blank.

---

**INNOTECH®**

Australian Owned, Designed & Manufactured  
by Mass Electronics Brisbane

**Phone:** +61 7 3421 9100 **Fax:** +61 7 3421 9101  
**Email:** [sales@innotech.com.au](mailto:sales@innotech.com.au) [www.innotech.com.au](http://www.innotech.com.au)

YOUR DISTRIBUTOR