

**MAXTract**

Data Log Extraction Utility for MAXIM Series Controllers

Overview

MAXTract is the data log extraction utility for the MAXIM Series controllers. It allows extraction of all or part of the history log data residing on a MAXIM controller in a specified data format.

Features

- Standalone utility for use with MAXIM Series controllers, connected either directly or over a network
- User oriented and very easy to use and configure
- Produces complete list of available log data for the selected MAXIM Series controller
- Ability to extract multiple data channels simultaneously
- Allows you to specify the date range for data to be extracted
- Full support for dial-in remote access via a modem or network connection
- Does not interfere with the operation of the MAXIM Series controller during data transfer
- Ability to extract up to 50 thousand readings on the MAXIM I and MAXIM II Controllers; up to 200 thousand readings on the Maxim III controller; and up to 1.2 million readings on a Sub System Gateway (for the Sub System Network)
- Progress bar during data extraction
- Extraction of log data can be stopped short of the target at any time
- Comprehensive online help



Applications

- Extraction of historical log data from any MAXIM Series controller
- Verification of available log points on MAXIM Series controllers

Specifications

Supported Operating Systems:

- Windows[®] 7 Professional 64-bit & 32-bit
- Windows[®] XP Professional 32-bit with Service Pack 3

Minimum System Requirements:

- Intel[®] Pentium[®] 2.8GHz dual core processor or equivalent
- 2GB of RAM
- 80GB Hard Disk Drive
- 1024 x 768 display with 16-bit video card
- CD-ROM or DVD-ROM drive
- Keyboard and Microsoft[®] mouse or compatible pointing device
- Requires a computer with iComm software installed

Any MAXIM, Any Data, Any Time!

MAXTract allows you to extract historical log data from any MAXIM Series controller on a network at any time. This can be done even while the controller is in operation. **MAXTract** displays a list of log data channels from which you can choose, allowing you to select one or more points to extract.

Instant Progress Read Back

While the data is being extracted from the MAXIM Series controller, **MAXTract** shows you the date to which the data has been extracted so far.

The log extraction process can be stopped whenever you desire, allowing you to use only the data that has been extracted so far.

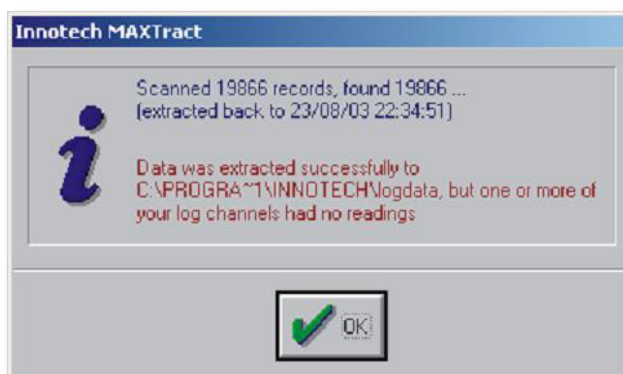
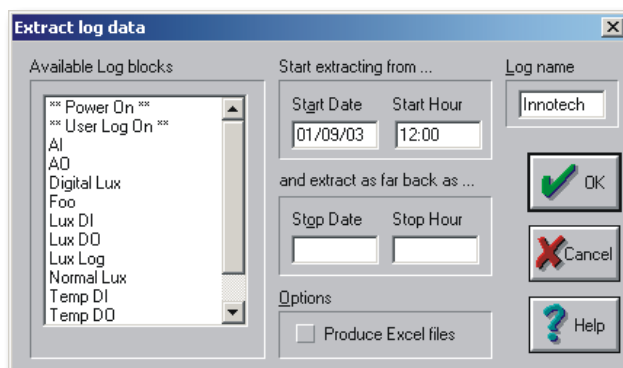
MAXTract displays the number of records it has scanned, and the number of records which match your search criteria.

Full Innotech Software Support

MAXTract can produce data files in standard formats such as CSV. However, there are few products on the market which can handle the large number of values that can be logged by the MAXIM controllers in a single display. Therefore Innotech has produced it's own graphing software called InnoGraph, designed specifically for handling the large quantity of data points produced by the MAXIM Series controllers.

Complete Network Support

MAXTract allows you to extract data from a single MAXIM Series controller, or from a controller on a network. You can also easily extract log data with a dial-up connection using a modem.



INNOTECH®

Australian Owned, Designed & Manufactured
by Mass Electronics Brisbane

Phone: +61 7 3421 9100 Fax: +61 7 3421 9101
Email: sales@innotech.com.au www.innotech.com.au

YOUR DISTRIBUTOR