



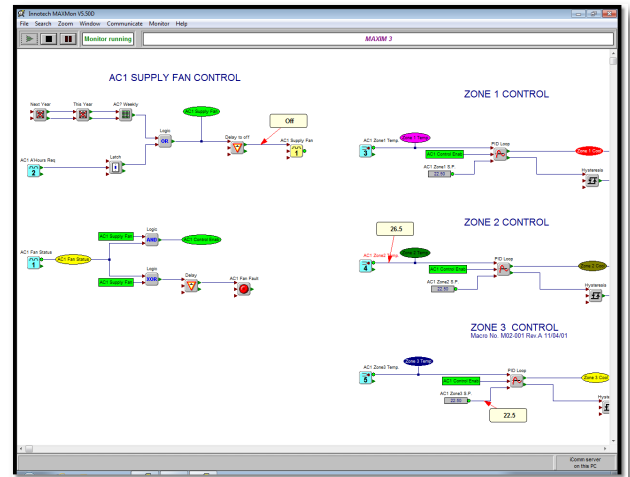
## Monitoring and Debugging Software for MAXIM Series Controllers

### Overview

**MAXMon** software aids with the commissioning and troubleshooting of MAXIM Series controllers by allowing you to monitor and debug configurations in real time. With **MAXMon** you can view the configuration as its being processed by the controller, allowing you to inspect, trend or modify the block values.

### Features

- View input/output values in real time simply by hovering over the input or output of a block with the mouse
- Allows changes to be made to most configuration blocks in real time
- Full zoom and pan of the configuration
- Trending of up to 5 values simultaneously in separate windows
- Pop-up I-window to view input/output values of blocks that are continuously updated in real time. Up to 31 I-windows can be created while monitoring a MAXIM I, II, VAVMax, SSG, MiniMAX or MicroMAX controllers. With the MAXIM III controller you can have up to 100 I-windows; although having more than 60 I-windows will slow **MAXMon** down considerably
- Ability to pause and freeze all values being monitored for analysis, including all trend windows. When monitoring is restarted, the trend windows are updated with all information accumulated during the pause
- All major MAXIM controller communication functions are supported, including system settings and network searching
- Consistent in operation to the **MAXCon** configuration utility
- Remote access via modem, Ethernet, or internet connection
- Comprehensive online help documentation



### Applications

- Inspection and trending of variables and I/O points of a MAXIM controller configuration in real time
- Commissioning and tuning of a MAXIM controller configuration in real time
- Calibrating MAXIM controller input values
- Changing system parameters

### Specifications

#### Supported Operating Systems:

- Windows® 7 Professional 64-bit & 32-bit
- Windows® XP Professional 32-bit with Service Pack 3

#### Minimum System Requirements:

- Intel® Pentium® 2.8GHz dual core processor or equivalent
- 2GB of RAM
- 80GB Hard Disk Drive
- 1024 x 768 display with 16-bit video card
- CD-ROM or DVD-ROM drive
- Keyboard and Microsoft® mouse or compatible pointing device
- Requires a computer with iComm software installed

## Calibrate Inputs with MAXMon

**MAXMon** allows you to modify most of the block values in real time. You can also calibrate analogue input values in real time, and see the immediate impact of the changes you make.

## Trend values with MAXMon

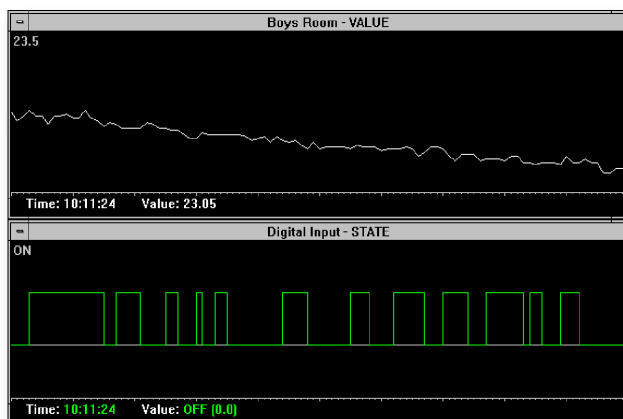
Any point on your configuration can be trended to graphically display a running history of its value. The trend graph for a point can be set to display in either digital or analogue mode, while the trend window can be moved, re-sized, re-scaled or re-coloured with ease! You can even move your cursor along any point in the trend window and display the value at that point in time.

## Full Networking Support

**MAXMon** software is designed to work with the MAXIM Series controllers on both the primary network and the Sub System Network. It allows you to view a list of devices currently on the network and communicate with any of the MAXIM series controllers.

## Product Compatibility

**MAXMon** will operate seamlessly with the full range of Innotech MAXIM family products and MAXIM family simulators on computers with supported Windows operating systems.



## Debug your Configurations

**MAXMon** uses the same user-friendly approach to its operation as **MAXCon**. At a glance, you can see the configuration of your MAXIM controllers and easily inspect the values in real time. You can also adjust the internal settings of any of the blocks while the configuration is being processed by the controller.

**MAXMon** is also a great tool to easily locate the point of failure in your configuration.

# INNOTECH®

Australian Owned, Designed & Manufactured  
by Mass Electronics Brisbane

**Phone:** +61 7 3421 9100 **Fax:** +61 7 3421 9101  
**Email:** [sales@innotech.com.au](mailto:sales@innotech.com.au) [www.innotech.com.au](http://www.innotech.com.au)

YOUR DISTRIBUTOR