



MAXIM III Simulator

MAXIM Series III Controller Software Simulator

Overview

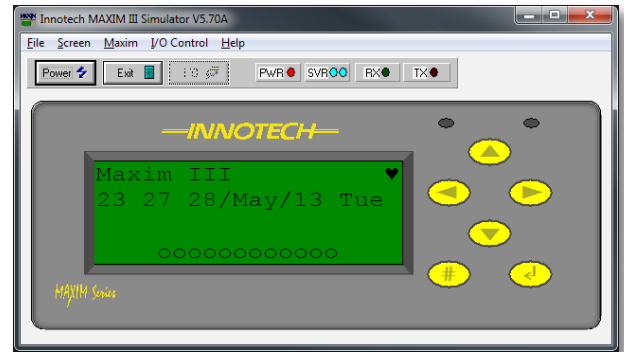
MAXIM III Simulator is a Windows® based software that simulates an Innotech MAXIM Series III Controller.

The Virtual MAXIM can be powered on, configured and interrogated in the same way as a physical MAXIM. Configurations can be downloaded and checked without requiring any hardware installation.

MAXIM III Simulator can be used in conjunction with any product from the MAXIM Software range.

Features

- MAXIM front panel simulation
- Simulation of MAXIM Series III processing
- I/O monitoring and control
- Transparent support for all Innotech MAXIM software packages
- Easy to use interface - no special training required



Applications

- Designing and testing configurations within a Windows environment
- Training aid for both the use of MAXIM Software and the Human Machine Interface (HMI)

Specifications

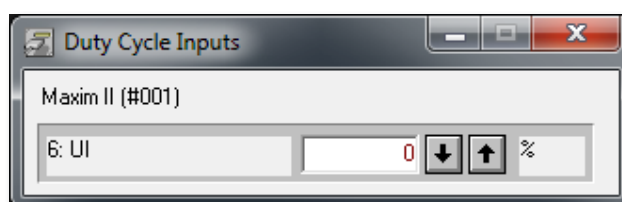
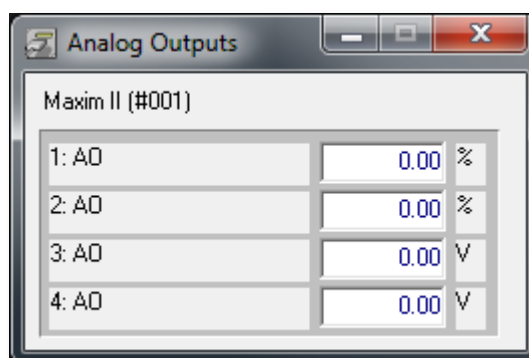
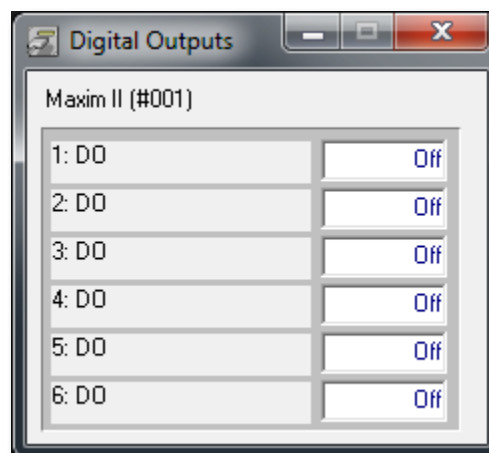
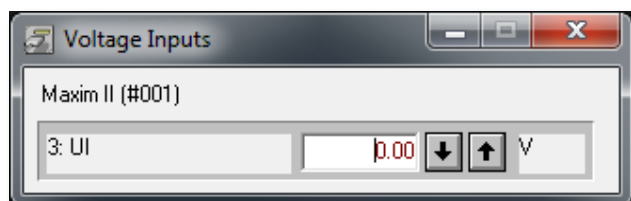
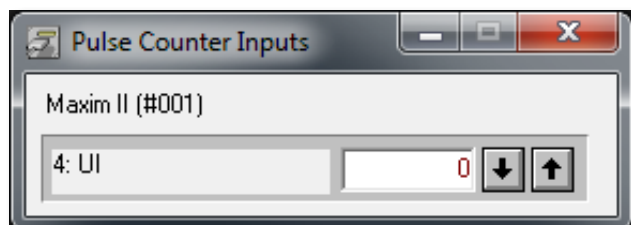
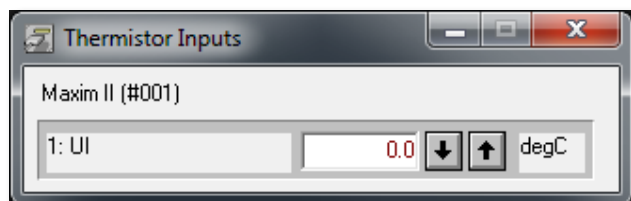
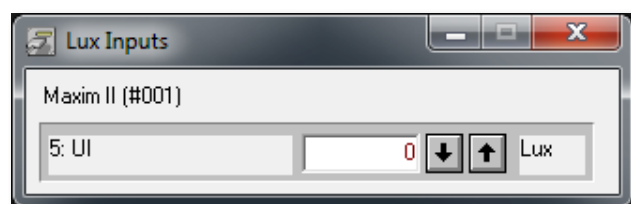
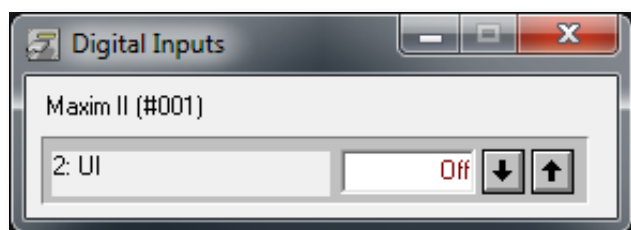
Supported Operating Systems:

- Windows® 7 Professional 64-bit & 32-bit
- Windows® XP Professional 32-bit with Service Pack 3

Minimum System Requirements:

- Intel® Pentium® 2.8GHz dual core processor or equivalent
- 2GB of RAM
- 80GB Hard Disk Drive
- 1024 x 768 display with 16-bit video card
- CD-ROM or DVD-ROM drive
- Keyboard and Microsoft® mouse or compatible pointing device
- Requires a computer with iComm software installed

Input/Output Control Windows



INNOTECH®

Australian Owned, Designed & Manufactured
by Mass Electronics Brisbane

Phone: +61 7 3421 9100 Fax: +61 7 3421 9101
Email: sales@innotech.com.au www.innotech.com.au

YOUR DISTRIBUTOR