



## MAXIM II Simulator

## MAXIM Series II Controller Software Simulator

### Overview

MAXIM II Simulator is Windows® based software that simulates an Innotech MAXIM Series II Controller.

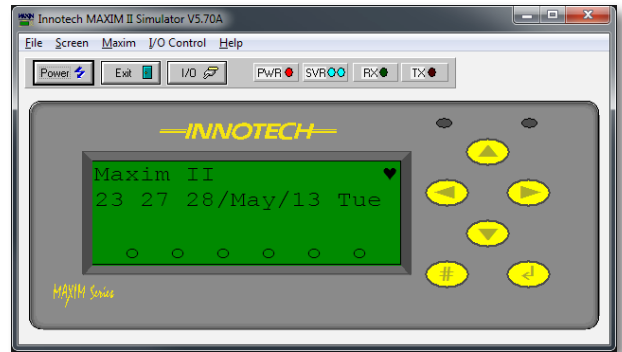
The virtual MAXIM can be powered on, configured and interrogated in the same way as a physical MAXIM.

Configurations can be downloaded and verified without requiring any hardware installation.

The MAXIM II Simulator can be used in conjunction with any product from the MAXIM Software range.

### Features

- Simulates the HMI of the MAXIM II controller
- Simulates the processing of the MAXIM II controller, while supporting MAXIM I configurations
- I/O monitoring and control
- Supports all Innotech MAXIM software packages
- Easy to use interface - no special training required



### Applications

- Designing and testing configurations within a Windows environment
- Training aid for both the use of MAXIM Software and the Human Machine Interface (HMI)

### Specifications

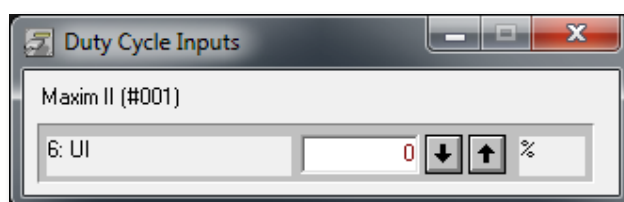
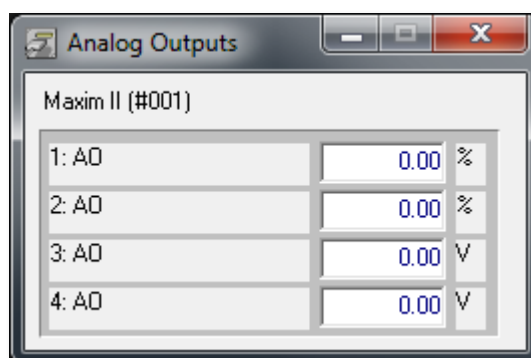
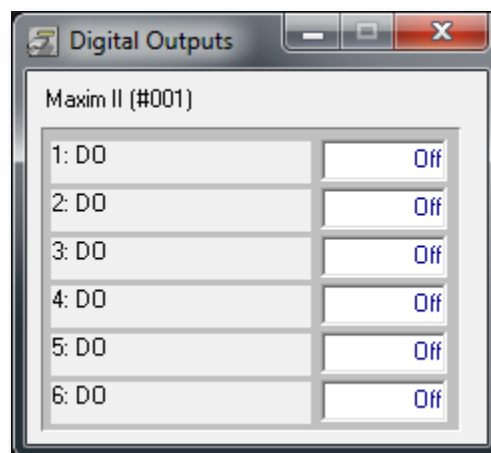
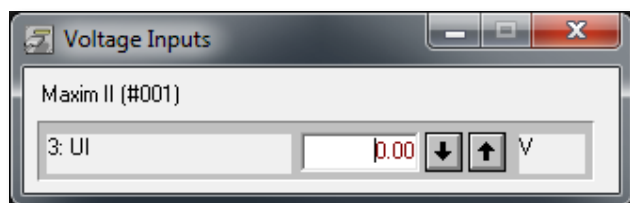
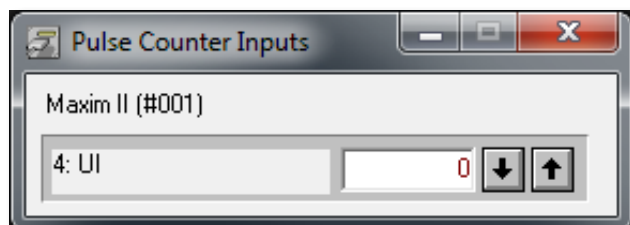
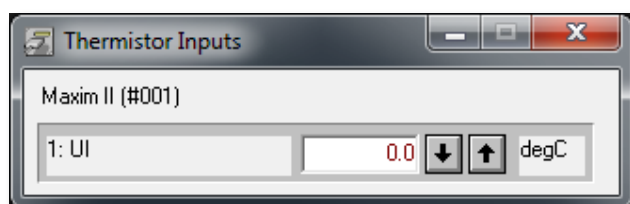
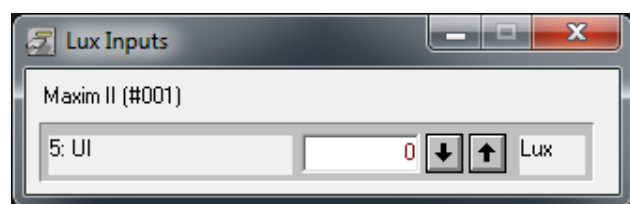
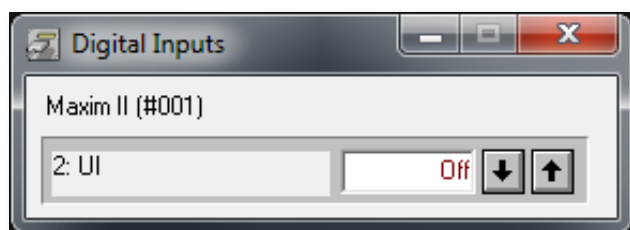
#### Supported Operating Systems:

- Windows® 7 Professional 64-bit & 32-bit
- Windows® XP Professional 32-bit with Service Pack 3

#### Minimum System Requirements:

- Intel® Pentium® 2.8GHz dual core processor or equivalent
- 2GB of RAM
- 80GB Hard Disk Drive
- 1024 x 768 display with 16-bit video card
- CD-ROM or DVD-ROM drive
- Keyboard and Microsoft® mouse or compatible pointing device
- Requires a computer with iComm software installed

## Input/Output Control Windows



# INNOTECH®

Australian Owned, Designed & Manufactured  
by Mass Electronics Brisbane

Phone: +61 7 3421 9100 Fax: +61 7 3421 9101  
Email: [sales@innotech.com.au](mailto:sales@innotech.com.au) [www.innotech.com.au](http://www.innotech.com.au)

YOUR DISTRIBUTOR