



MAXIM 1010 Simulator

MAXIM Series 1010 Controller Software Simulator

Overview

The **MAXIM 1010 Simulator** is Windows® based software that simulates an Innotech MAXIM Series 1010 Controller.

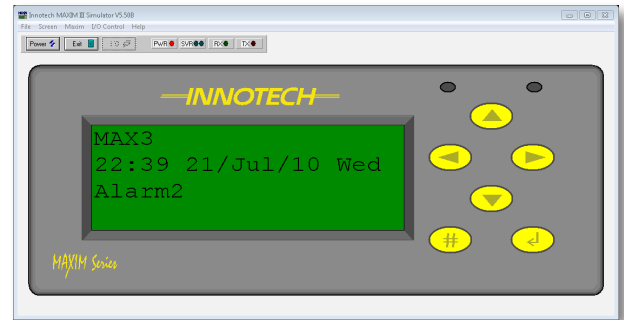
The **MAXIM 1010 Simulator** can be powered on, configured, and interrogated in the same way as a physical MAXIM 1010 controller.

Configurations can be downloaded and checked without requiring any hardware installation.

MAXIM 1010 Simulator can be used in conjunction with any product from the MAXIM Software range.

Features

- Simulates the HMI of the MAXIM 1010 controller
- Simulates the processing of the MAXIM 1010 controller
- I/O monitoring and control
- Supports all Innotech MAXIM software packages
- Easy to use interface - no special training required



Applications

- Designing and testing configurations within a Windows environment
- Training aid for both the use of MAXIM software and the Human Machine Interface (HMI) of the MAXIM 1010 controller

Specifications

Supported Operating Systems:

- Windows® 7 Professional 64-bit & 32-bit
- Windows® XP Professional 32-bit with Service Pack 3

Minimum System Requirements:

- Intel® Pentium® 2.8GHz dual core processor or equivalent
- 2GB of RAM
- 80GB Hard Disk Drive
- 1024 x 768 display with 16-bit video card
- CD-ROM or DVD-ROM drive
- Keyboard and Microsoft® mouse or compatible pointing device
- Requires a computer with iComm software installed

This page has been left intentionally blank.

INNOTECH®

Australian Owned, Designed & Manufactured
by Mass Electronics Brisbane

Phone: +61 7 3421 9100 **Fax:** +61 7 3421 9101
Email: sales@innotech.com.au www.innotech.com.au

YOUR DISTRIBUTOR