



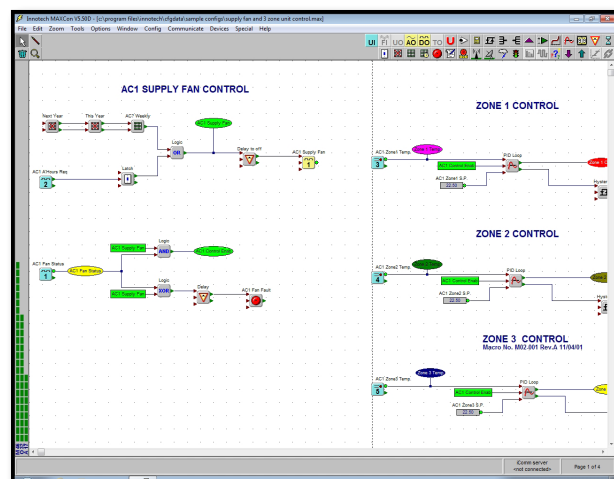
## Graphical Configuration Utility for MAXIM Series Controllers

### Overview

**MAXCon** is the configuration software for Innotech's MAXIM Series controllers. **MAXCon** allows you to internally configure a MAXIM series controller by using a simple point-and-click approach on a Windows® computer.

### Features

- 36 function block types, ranging from a simple Logic Gate to more complex Schedule or PID function blocks
- Free text available to clarify parts of your configuration
- Auto-routing of line connections
- Colour and options configuration
- Supports use of labels to reduce direct line connections
- Automatically saves your work in a backup file
- Macro facility allows pasting of pre-drawn sections of a configuration
- Bar graphs that provide available resource information
- Provides a graphical printout of your configuration in colour or monochrome
- Uses context-sensitive line colours to aid in detecting design errors
- Creates a wiring diagram automatically based on your configuration
- Powerful search and replace mechanism for objects in your configuration
- Allows zooming and panning of your display
- Remote access via modem, Ethernet, or internet connection
- Comprehensive on-line help documentation



### Applications

- Internal configuration of the Innotech MAXIM controller
- Configuration of the Innotech Modem Printer Interface

### Specifications

#### Supported Operating Systems:

- Windows® 7 Professional 64-bit & 32-bit
- Windows® XP Professional 32-bit with Service Pack 3

#### Minimum System Requirements:

- Intel® Pentium® 2.8GHz dual core processor or equivalent
- 2GB of RAM
- 80GB Hard Disk Drive
- 1024 x 768 display with 16-bit video card
- CD-ROM or DVD-ROM drive
- Keyboard and Microsoft® mouse or compatible pointing device
- Requires a computer with iComm software installed

## Simple Yet Powerful!

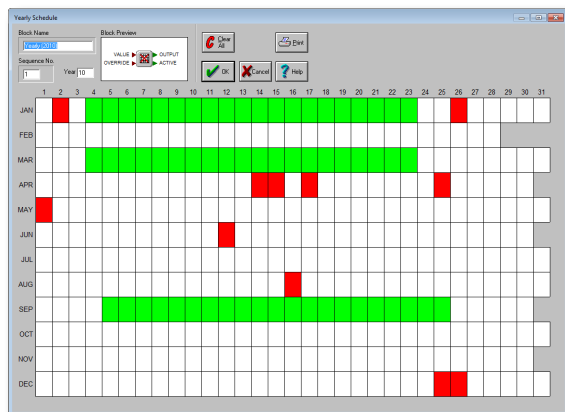
**MAXCon** uses block programming to program a configuration for MAXIM Series controllers. The configuration specifies which inputs of the MAXIM controller are related to which outputs and how these will be processed internally using I/O blocks. Within minutes, you can construct a full-featured control program and transfer it to your MAXIM controller. **MAXCon** is also able to read back a configuration from any MAXIM Series controller complete with all lines, labels and text ready for easy viewing and editing on a computer.

## Easily Configure Your Blocks

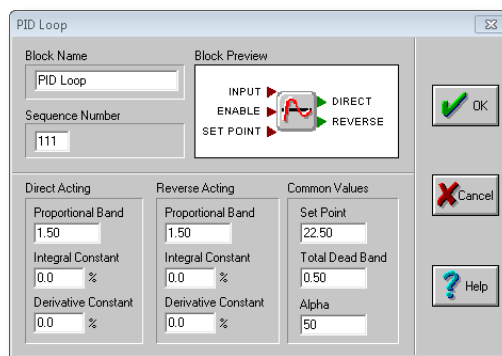
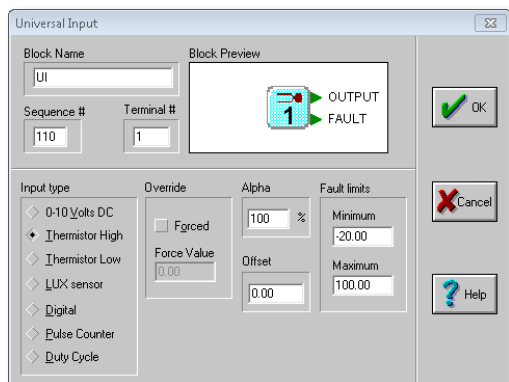
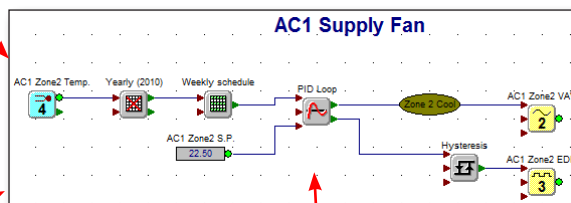
Just double-click on any of the blocks in your configuration, and the block dialogue box will allow you to precisely tune the operation of the block.

## Full Networking Support

**MAXCon** can work with a single MAXIM Series controller, as well as with a network of MAXIM II, MAXIM III, MiniMAX, MicroMAX and/or VAVMax controllers. It allows you to view a list of controllers currently on the network and communicate with any of the MAXIM Series controllers.



Some blocks are configured differently to others...



**MAXCon** contains a wide variety of control functions, ranging from the simple digital logic functions of AND, OR and NOT to more complex blocks such as a scheduler, timer or PID control algorithms. The 36 blocks available can be combined in countless ways to produce configurations tailored precisely to your requirements.

# INNOTECH®

Australian Owned, Designed & Manufactured  
by Mass Electronics Brisbane

Phone: +61 7 3421 9100 Fax: +61 7 3421 9101  
Email: [sales@innotech.com.au](mailto:sales@innotech.com.au) [www.innotech.com.au](http://www.innotech.com.au)

YOUR DISTRIBUTOR