



Overview

Magellan Server allows remotely connected Innotech Magellan users to display a loaded Magellan Builder project.

Magellan Server hosts the project for remote access and allows remote clients to display frames of a Magellan project through a network or internet connection without needing a local copy of the project.

Features

- A copy of the Magellan project file (.mpk) needs to be stored and maintained on the server
- All audit logging is carried out on the server PC giving a centralised audit trail repository
- Updates to the master project file are automatically recognised by the clients next time they connect to Magellan Server
- The Magellan Server software licence provides support for concurrent connections over a network or internet connection
- Efficient interaction between client and server ensures only the required components of the Magellan project are transferred to the client
- Client-side caching ensures that graphical images are only transferred if they have not previously been accessed by the client
- Integrated support for Crystal Reports
- Relational database support for Microsoft® SQL Server® 2016 R2
- Display Historic Trend information via Innotech® Chronicle Server, with support for up to 100 SQL Server database connections in a project (not-concurrent)
- Can be configured to use SSL Certificates and https

Specifications

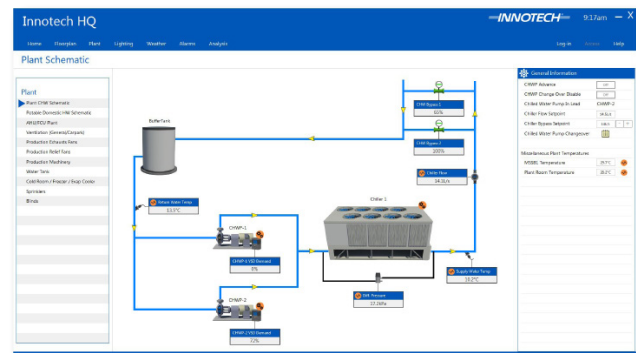
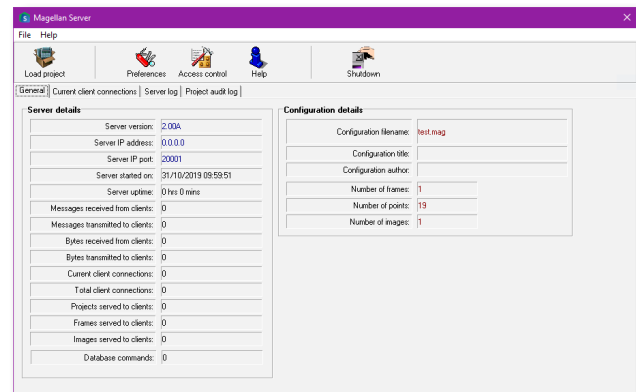
- Requires firewall access to port 20001 and port 8080 on Magellan Server computer
- Requires firewall access to iComm port 20000 on iComm Server computer
- Does not support Magellan projects which interact with OPC devices

Supported Operating Systems

- Windows®10 Professional 64-bit
- Windows® Server 2019
- Windows® Server 2016 R2

Windows Minimum System Requirements

- Intel® Pentium® 2.8GHz dual core processor or equivalent
- 8GB of RAM
- 1920 x 1080 display with 16-bit video card for standard graphics
- 350MB Hard Disk Space
- Keyboard and Microsoft® mouse or compatible pointing device
- Requires a computer with iComm software installed



Magellan Server Licence Details

Magellan Server requires a software licence

- Standard licence - 250 points, 2 client access

Point / Client Information

- < 5000 points - 2 client access
- 5000-9999 points - 5 client access
- 10000-50000 points - 10 client access

Feature licences can be purchased to allow multiple concurrent Magellan Server connections and for increasing the point limit.

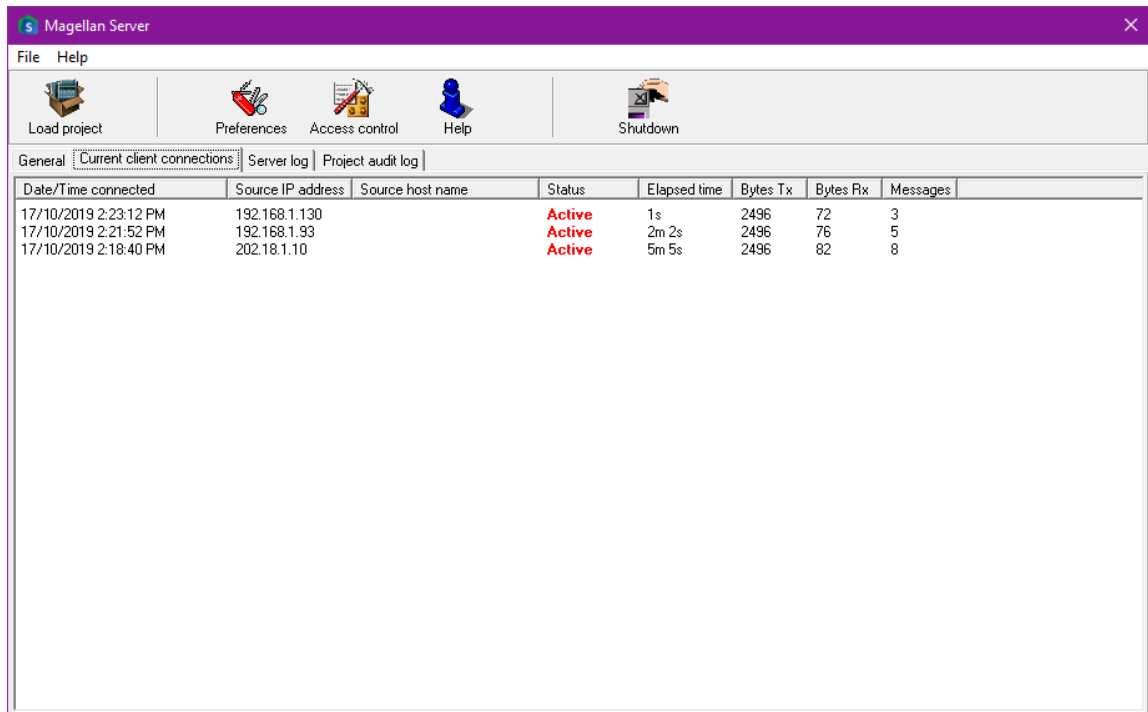
- **Maximum supported points - 50000**
- **Maximum supported clients - 10**

Available Feature Licences

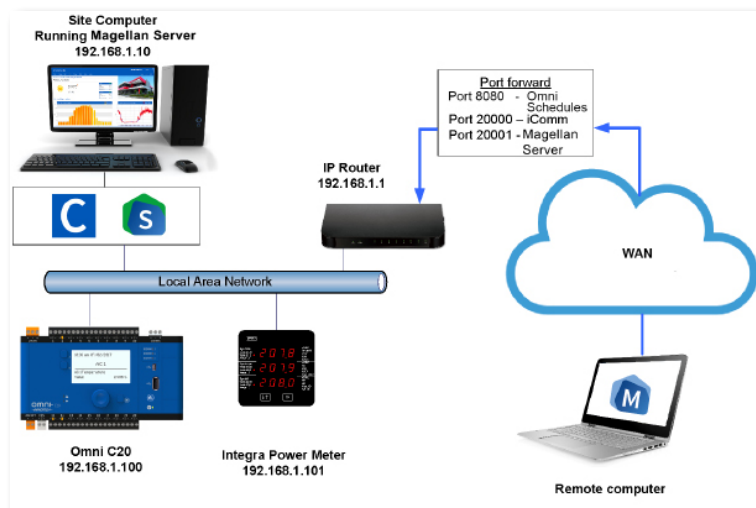
Licence	Type
Add Clients	3 Clients
	5 Clients
	8 Clients
Increased Point Limit	250
	750
	1750
	4750
	9750
	49750

Architecture

Magellan Server runs continuously on a host PC and is always loaded with a single Magellan project created using Magellan Builder. Magellan Server accepts connections from end users using Innotech Magellan. As the user navigates through the Magellan frames Magellan Server downloads the necessary sections of the project as required.



Sample Magellan Server client connection window with three concurrent connections



Example Magellan Server Network Topology

i This product includes software developed by the OpenSSL Project for use in the OpenSSL Toolkit. (<http://www.openssl.org/>)