



Overview

Innotech's Magellan software is an event-driven, object oriented real-time Supervisory Control and Data Acquisition (SCADA) package. It provides a simple, intuitive mechanism to effortlessly design either simple or sophisticated supervisory and control programs using a drag-and-drop approach.

Innotech Magellan is a standalone runtime-only client for the end user to remotely access Magellan Server projects created by Magellan Builder.

Features

- Event driven processing strategy for fast, efficient operation
- Real time operation allows new values to be displayed as soon as they change
- Alter project adjustable items such as setpoints and schedules
- View live and historical trend data configured for the project
- Multi-level access control to a limited number of users
- Landing page lists multiple server connections
- Audit trail
- Displays a wide range of built in graphical objects
- Access and view generated reports
- Relational database support for Microsoft SQL Server® 2016 R2
- Display Historic Trend information via **Innotech® Chronicle Server**
- PNG with transparency & JPG support
- Automatically resizes to suit different screen resolutions

Specifications

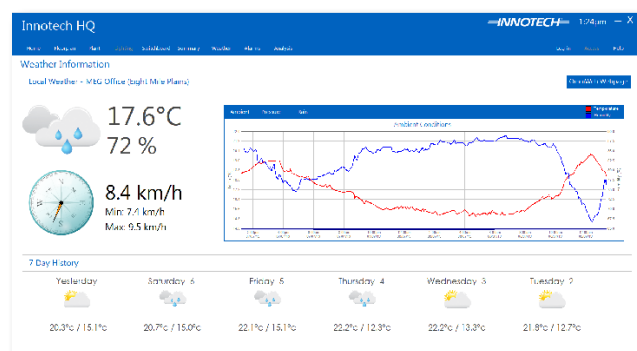
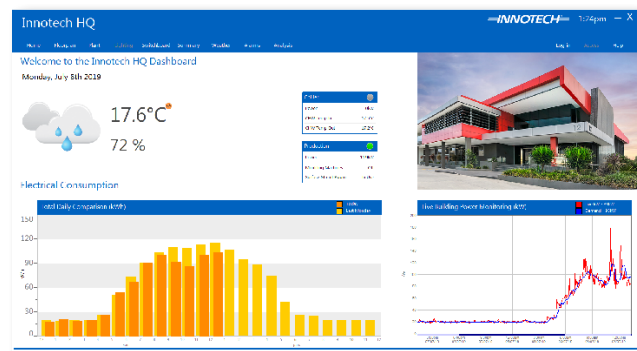
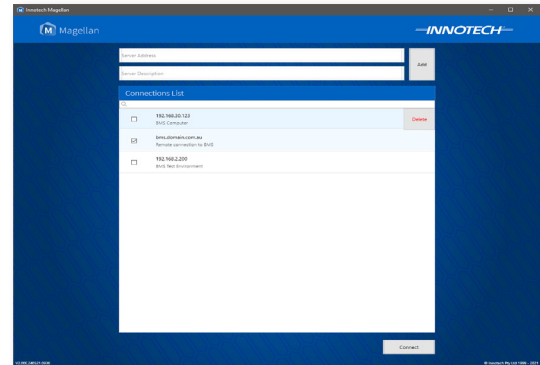
- Uses **Innotech Magellan Server** to access devices

Supported Operating Systems

- Windows® 10 Professional 64-bit
- Android 6.0 Marshmallow and higher

Windows Minimum System Requirements

- 2 GHz or faster processor
- 4GB of RAM
- 1920 x 1080 display with 16-bit video card for standard graphics
- 250MB Hard Disk Space

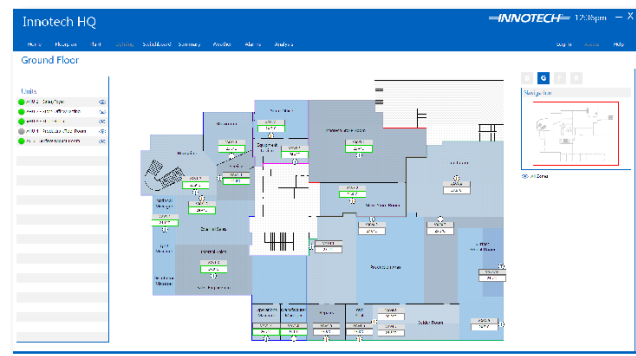


Applications

- Building Management Systems
- Shopping Centre Management
- Agriculture/Horticulture Monitoring
- Factory Process and Control
- Domestic Lighting & Control Applications

Graphics

- Ability to display custom images and photographs of plant and equipment
- Supports multiple images types
- Simulated variable speed rotation of images



Alarms

- Alarms can be easily viewed by Category
- Notes can be made by users providing additional information
- Reports can be extracted detailing alarm history



i This product includes software developed by the OpenSSL Project for use in the OpenSSL Toolkit. (<http://www.openssl.org/>)

INNOTECH®

Australian Owned, Designed & Manufactured
by Mass Electronics Brisbane

@ sales@innotech.com

🌐 www.innotech.com

☎ +61 7 3421 9100

© MASS ELECTRONICS Pty Ltd 1999

INNOTECH and the INNOTECH logo are registered and unregistered trademarks of Mass Electronics Pty Ltd in Australia, the USA and other countries.