



## Overview

Innotech® Service and Event Analyser (iSEA) is a Windows® based tool designed to function as part of an Innotech software environment, managing and monitoring compatible Innotech software applications on a single computer.

iSEA automatically launches compatible Innotech software at computer launch and login, and restarts the software should it cease operating for any reason. iSEA keeps comprehensive reporting logs of any event as they occur, alerting the user as required.

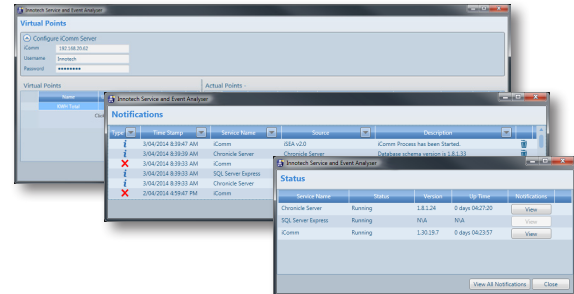
iSEA also provides a mechanism for Virtual Points, enabling cross-software monitoring between other Innotech applications. iSEA resides as a discreet application accessible from the Windows System Tray.

## Features

- Modern Graphical User Interface
- Real-time monitoring of events as part of an Innotech software environment
- Automatically launches or restarts compatible Innotech software as required
- Compatible with the following Innotech software applications:
  - Chronicle Server 2.1 and greater
  - iComm (latest version from Innotech website)
- Enables the creation of Virtual Points for use by Innotech iComm Server
- Discreetly resides in the Windows System Tray, with an animated icon providing clear indication of iSEA notifications or alerts
- Supports BACnet addresses 0 to 4,194,302

## Applications

- Automatically start or restart critical Innotech software applications
- Provide comprehensive event reporting logs to aid with installation troubleshooting
- Enables the monitoring of alerts, tenant targets and the status of Innotech software applications when used in conjunction with Innotech FM Server, Chronicle Server and iComm



## Supported Operating Systems

- Windows® 10 64-bit
- Windows® Server 2012 R2
- Windows® Server 2016
- Windows® Server 2019

**i** Windows 10 builds are supported for approximately 18 months after release. It is recommended that you should upgrade your operating system if using an unsupported build.

## Minimum System Requirements

- Intel® Pentium® 2.8GHz dual core processor or equivalent
- 4GB of RAM
- 10MB Hard Disk Drive space required
- 1024 X 768 display with 16-bit video card
- Keyboard and mouse or compatible pointing device
- Microsoft .NET™ Framework (v4.0 or later)
- Innotech iComm (latest version from Innotech website)

This page has been left intentionally blank.



Australian Owned, Designed & Manufactured  
by Mass Electronics Brisbane

@ [sales@innotech.com](mailto:sales@innotech.com)     [www.innotech.com](http://www.innotech.com)     +61 7 3421 9100

© MASS ELECTRONICS Pty Ltd 2012

---

INNOTECH and the INNOTECH logo are registered and unregistered trademarks of Mass Electronics Pty Ltd in Australia, the USA and other countries.