

**InnoGraph**

## Data Log Graphing and Analysis Tool for Innotech® Digital Controllers

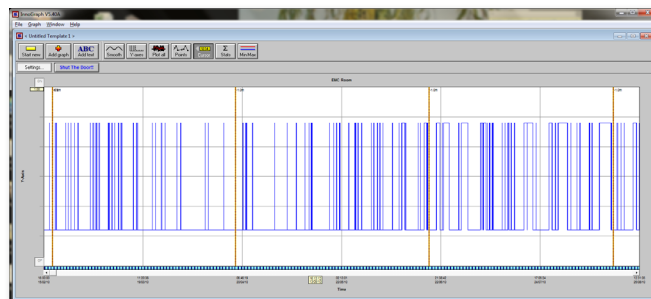
### Overview

**InnoGraph** is Innotech's data log graphing and analysis tool. Although it has been designed to be used specifically with the Genesis II and MAXIM Series Digital Controllers for data logging and graphing, it is flexible enough to work with other data logging and graphing sources.

**InnoGraph** allows multiple graphs to be simultaneously displayed in multiple window. Complete with a host of configurable display options, statistical analysis of data points, analogue and digital value support, active cursors, colour printing capability, and comprehensive zooming and panning features, **InnoGraph** is your complete graphing package.

### Features

- Support for large volume of data points (over 1/2 million per graph channel)
- Full utilisation of multiple graph display windows
- Dynamic cached fast-refresh drawing capabilities
- Support for unlimited text labelling on graphs with fully configurable text attributes (colour, font, size, etc.)
- Ability to display each graph in a window with a separate scaled Time axis
- Several display enhancement functions, such as smoothing, selective point plotting, hidden-point averaging, and colour/line type selection
- Display of statistical analysis of graphs
- Graph-file templates to enable quick loading of previous graphs complete with their unique settings
- Tailoring of the defaults for each new graph
- Graph files displayed in a hierarchical format allowing for easy selection of graphs
- Versatile zooming functions complete with zoom-history
- Horizontal scrolling of graphs in any zoom magnification
- Active cursors to show the value on the graph as the mouse moves
- Tailoring of individual graphs at the click of a button on the toolbar
- Full colour resolution-enhanced printing, resulting in a less jagged line on printouts
- Optional day/night line representing the time of day at an instant along the base of the graphs
- Very comprehensive on-line help and user documentation



### Applications

- Viewing history log data from a Genesis II or MAXIM Series Digital Controller
- Statistical analysis of history log data

### Supported Operating Systems:

- Windows® 7 Professional 64-bit & 32-bit
- Windows® XP Professional 32-bit with Service Pack 3

### Minimum System Requirements:

- Intel® Pentium® 2.8GHz dual core processor or equivalent
- 2GB of RAM
- 80GB Hard Disk Drive
- 1024 x 768 display with 16-bit video card
- CD-ROM or DVD-ROM drive
- Keyboard and Microsoft® mouse or compatible pointing device
- Requires a computer with iComm software installed
- Requires customer registration on installation
- Upgrade versions available on request

## InnoGraph handles it all!

Not only does **InnoGraph** have the ability to read files having more than 1/2 a million points per channel, Innotech has spent much time and effort in ensuring that it does so without the user going to sleep! But you can also be assured that you will be able to pick up any spikes or undue anomalies in your 500,000 data points by selecting the Plot All function from **InnoGraph**. This ensures that **InnoGraph** shows the maximum and minimum values of every data point on the screen.

## Day or Night?

**InnoGraph** shows you at a glance whether or not points on the graph are during the day (6:00AM to 6:00 PM) or during the night with a convenient day/night line at the bottom of the graph - the dark bars are night, and the light bars are day.

## Finding files is now simple

Selecting your graph files is easy with **InnoGraph** with the files being displayed in a tree format. There are even icons next to each file telling you what type of file it is - whether it is an Analogue, Digital, Alarm or User Logon.

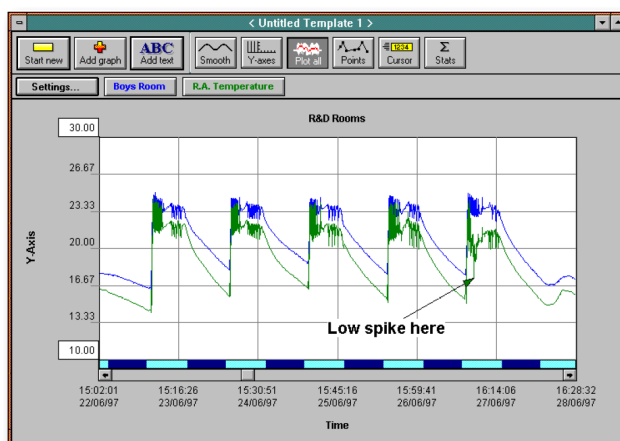
## Statistical Analysis

**InnoGraph** can analyse either Analogue values to produce mean, maximum, minimum, and variance calculations. It can also analyse Digital values to produce an average ON time, average OFF time and the number of cycles displayed in your window.

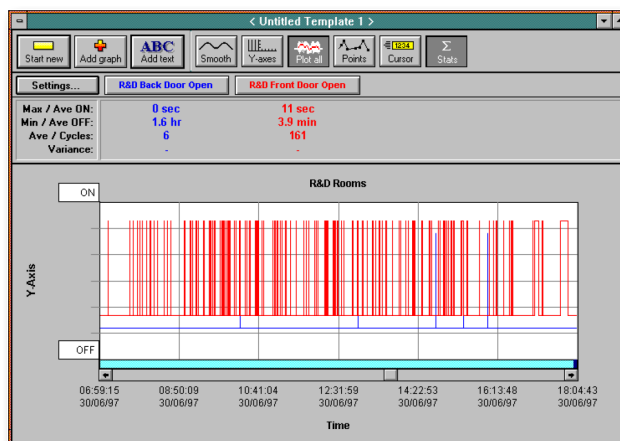
Take the example to the right - the Genesis II Direct Digital Controller for the R&D room air conditioning equipment is also logging the opening and closing of the R&D room door. It is easy to see that on the 30th of June, 1997, the front door was opened and closed 161 times throughout the day, with an average open time of 11 seconds and an average time closed of 3.9 minutes!

## Find your way with Text

After traversing through your graphs, you can label any part with some text. You can set the text to be relative to a certain point on the graph - so when you scroll or zoom, the text will scroll and zoom with the graph.



- Test V1.04 20/05/97 11:38:24 (v104.igf)
- DDC #2 20/05/97 14:47:32 (v107.igf)
- R&D Rooms 19/06/97 7:57:17 (rdjun19.igf)
- Alarm Logs (Chan: -3)
- Power On (Chan: -2)
- User Log On (Chan: -1)
- Accum Error (Chan: 6)
- Adj SP (Chan: 8)
- Boys Room (Chan: 10)



# INNOTECH®

Australian Owned, Designed & Manufactured  
by Mass Electronics Brisbane

Phone: +61 7 3421 9100 Fax: +61 7 3421 9101  
Email: [sales@innotech.com.au](mailto:sales@innotech.com.au) [www.innotech.com.au](http://www.innotech.com.au)

YOUR DISTRIBUTOR