



Communications Server for Innotech® Digital Controllers

Overview

iComm is the communications server used by application software to communicate with Innotech® digital controllers. It supports multiple concurrent applications communicating with multiple servers and device networks. **iComm** is the communications hub of any HMI-integrated device network.

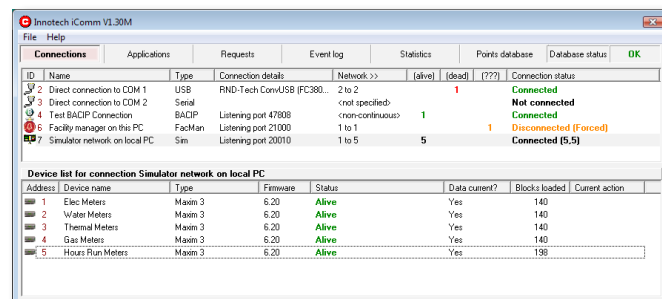
iComm supports communication to Innotech devices using a range of communication methods such as Serial, USB, TCP/IP, BACIP or Internal Simulator connections. Additionally, **iComm** supports communication with 3rd party devices through supported protocols, such as BACIP networks.

There is no practical limit to the number of applications that can be simultaneously connected to **iComm**.

iComm boasts an impressive diagnostic front screen allowing the user to analyse usage, traffic and communications activity in real-time.

Features

- Robust and efficient construction using the latest multi-threaded programming techniques
- Multiple concurrent application connections supported
- Multiple concurrent network connections serviced
- Detailed listing of all registered services with accurate status information
- Listing of devices available for a specific connection
- Consolidated listing of requests for values from all applications
- Detailed event log to window or to log file with filters
- Comprehensive on-line help available
- Display of currently-connected applications with their IP address and name
- Statistics page showing bytes of network traffic to and from server
- ActiveX control interface for third-party applications
- Uses 128 bit encryption for login authentication
- Resistant to network hacking, worms or denial of service attacks
- Data values can be logged to a Microsoft® Access™ database
- Logged data values can be graphed directly in iComm
- Built-in protocol analysis



Applications

- All Innotech programs that communicate with Innotech digital controllers require iComm
- Third-party applications can interface with iComm via ActiveX control (.ocx) to communicate with Innotech digital controllers

Specifications

- Distributed on one CD as a standalone package, or distributed free as part of most Innotech software
- Upgrade versions available on request
- Requires TCP/IP support

Supported Operating Systems:

- Windows® 7 Professional 64-bit & 32-bit
- Windows® XP Professional 32-bit with Service Pack 3

Minimum System Requirements:

- Intel® Pentium® 2.8GHz dual core processor or equivalent
- 2GB of RAM
- 80GB Hard Disk Drive
- 1024 x 768 display with 16-bit video card
- CD-ROM or DVD-ROM drive
- Keyboard and Microsoft® mouse or compatible pointing device
- Requires a computer with iComm software installed

This page has been left intentionally blank.

INNOTECH®

Australian Owned, Designed & Manufactured
by Mass Electronics Brisbane

Phone: +61 7 3421 9100 **Fax:** +61 7 3421 9101
Email: sales@innotech.com.au www.innotech.com.au

YOUR DISTRIBUTOR