

Models:

GENII Poly Chip

GENII Poly Chip RS485 Protection Plug

Overview

The Innotech GENII POLY CHIP RS485 protection plug protects the RS485 chip sets on the GENESIS II Digital Controller against medium level spikes, or transient earth problems between GENESIS devices.

Features

- RS485 transient and over-voltage protection
- Provides up to ~50V protection
- Transient protection to EN61000-4-4 Level 3

Application Notes

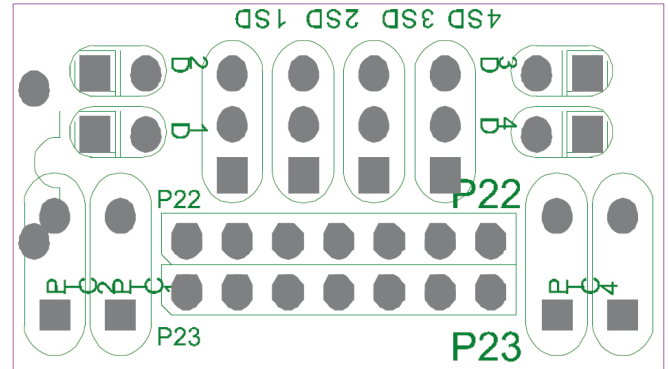
The GENII POLY CHIP RS485 protection plug is designed for additional protection on GENESIS II Digital Controllers that are located in electrically hostile environments, where the inherent protection of the RS485 drivers are insufficient.

Whilst a GENII POLY CHIP is tripped, the COMMS will not operate until the source of the fault has been removed.

The GENII POLY CHIP RS485 protection plug is not designed for application where a constant earth potential difference exists between GENESIS II Digital Controllers.

The GENII POLY CHIP RS485 protection plug does not replace the existing option of GENII RS485I Isolated Comms Cards or the GENII RPTR Isolated Repeater.

The GENII POLY CHIP RS485 protection plugs cannot protect against a permanent potential difference on the COMMS network.

**Applications**

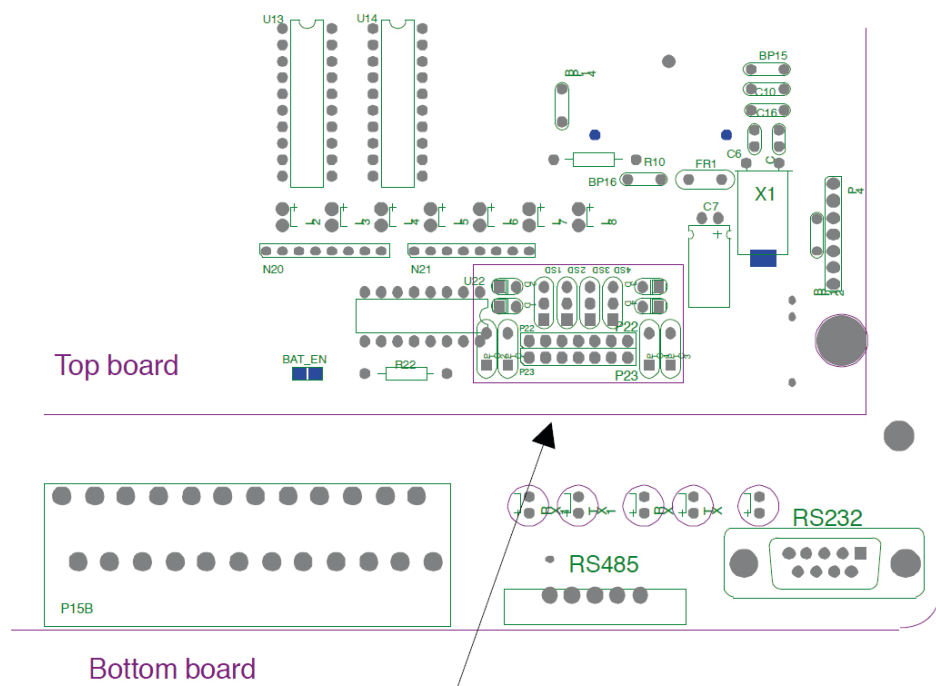
- It is recommended that GENII POLY CHIP RS485 Protection Plugs be fitted where multiple GENESIS II Digital Controllers exist on a network that runs for some distance.
- The GENII POLY CHIP RS485 Protection Plugs are also recommended for GENESIS II Digital Controllers that have networks that run near devices that are known to introduce transients to the surrounding environment.

Installation

The GENII POLY CHIP is fitted to a GENESIS II Digital Controller in the following manner:

1. Power down the GENESIS II Digital Controller.
2. Remove the GENESIS II Digital Controller front cover.
3. Locate the position of the RS485 connections on the bottom printed circuit board.
4. Remove all of the shunt headers and install the GENII POLY CHIP as shown, ensuring that it is plugged into the bottom row of the dual 7 way pin strip.
5. Replace the top board taking care to locate the shunts connecting the top and bottom boards correctly.
6. Replace the GENESIS II Digital Controller front cover and re-power.

GenII Poly Chip RS485 PROTECTION PLUG



Note : View of bottom right-hand corner of controller.

INNOTECH®

Australian Owned, Designed & Manufactured
by Mass Electronics Brisbane

Phone: +61 7 3421 9100 **Fax:** +61 7 3421 9101
Email: sales@innotech.com.au www.innotech.com.au

YOUR DISTRIBUTOR