



Genesis V

Virtual Genesis II Digital Controller

Overview

Virtual Genesis is a Windows-based software program that emulates an Innotech Direct Digital Controller (DDC) and Remote Module Interface (RMI).

The virtual controller can be powered on, configured and interrogated in the same way as a physical DDC. All I/O points are remotely located from the computer on Innotech Remote Expansion Modules (REMs).

Virtual Genesis can be used in conjunction with other Innotech programs such as Gen2Config and Gen2Monitor to configure, monitor and control a site.

Applications

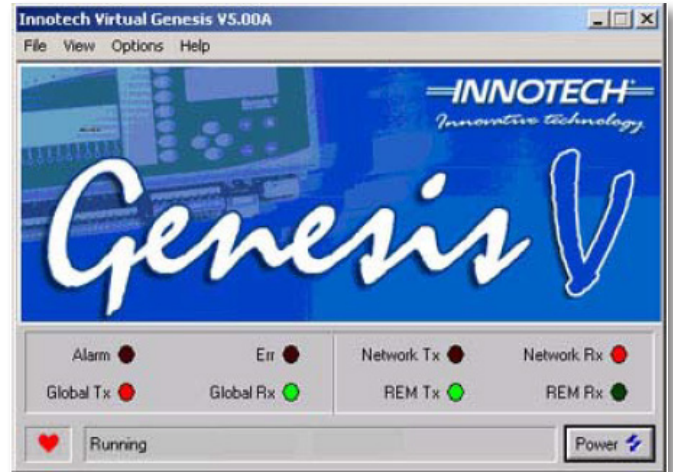
Control of sites requiring any of the following:

- Large, complex configurations
- High data logging capabilities
- Up to 15 remote expansion modules
- High DDC resource count

Specifications

Distributed on one CD

- Requires Windows 2000 or XP
- A Pentium III with 128Mb RAM, or higher, operating system is recommended
- Requires 30Mb free disk space
- Requires 2-4 serial (USB or COM) ports on your PC
 - a. Remote Expansion Modules require one serial COM port.
 - b. Hardware key (dongle) protection requires one USB (or LPT) port.



Features

- Higher block and resource limits than a standard physical DDC, including:
 - a. Total Blocks: 2000
 - b. Log Blocks: 500
 - c. Accumulators: 200
 - d. Alarm Blocks: 200
 - e. Global Outputs: 100
- Supports up to 15 Remote Expansion Modules of any type without requiring a Remote Module Interface (RMI)
- Network & Global communications via USB port, COM port or iComm Server
- REM communications via serial port only
- Rapid extraction of logged data
- Not limited by REM Resource Count

This page has been left intentionally blank.

INNOTECH®

Australian Owned, Designed & Manufactured
by Mass Electronics Brisbane

Phone: +61 7 3421 9100 **Fax:** +61 7 3421 9101
Email: sales@innotech.com.au www.innotech.com.au

YOUR DISTRIBUTOR