



## Data Log Extraction Utility for Genesis II Digital Controllers

### Overview

**Gen2Xtract** is the data log extraction utility for Innotech® Genesis II Digital Controllers. **Gen2Xtract** allows extraction of all or part of the history log data residing on a Genesis II Direct Digital Controller or Genesis II Mid Points Controller, into a specified data format.

### Features

- Standalone program for use with the Genesis II Digital Controller either directly or over a network
- Very easy to use and configure
- Produces complete list of available log data for a Genesis II Digital Controller from which the user selects
- Can extract multiple channels simultaneously
- Allows the user to specify the date and time range for the data to be extracted
- Full support for dial-in remote access via a modem or network connection
- Very comprehensive on-line help and user documentation
- Disk caching used to speed up transfer from Genesis II Digital Controllers
- Allows the Genesis II Digital Controller to continue to operate normally during transfer of log data
- Ability to extract up to 1/2 a million readings and write the data in your specified data format.
- Convenient progress display while extraction is in progress
- Extraction can be stopped short of the target at any time

### Applications

- Extraction of history log data from a Genesis II Digital Controller
- Verification of available log points on a Genesis II Digital Controller
- Network testing of a Genesis II Digital Controller network



### System Requirements

#### Supported Operating Systems:

- Windows® 7 Professional 64-bit & 32-bit
- Windows® XP Professional 32-bit with Service Pack 3

#### Minimum System Requirements:

- Intel® Pentium® 2.8GHz dual core processor or equivalent
- 2GB of RAM
- 80GB Hard Disk Drive
- 1024 x 768 display with 16-bit video card
- CD-ROM or DVD-ROM drive
- Keyboard and Microsoft® mouse or compatible pointing device
- Requires a computer with iComm software installed
- Requires customer registration on installation
- Upgrade versions available on request

## Any Data, Any Time!

**Gen2Xtract** allows the user to extract historical log data from any Genesis II Digital Controller on a network at any time, even while the controller is in operation. **Gen2Xtract** allows you to select and extract data from one or several data channels displays a list of log data channels to choose from, allowing you to select one or many to extract.

## Instant Progress Information

While you are extracting your data from the Genesis II Digital Controller, **Gen2Xtract** displays exactly how far back into history you have travelled with the extraction.

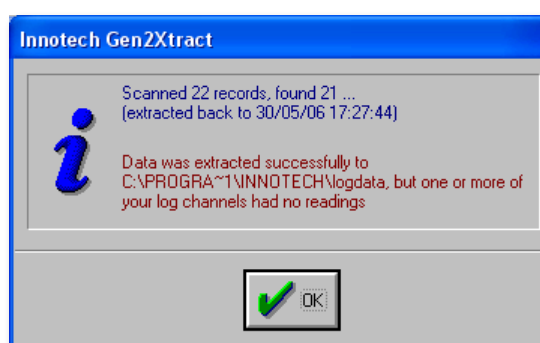
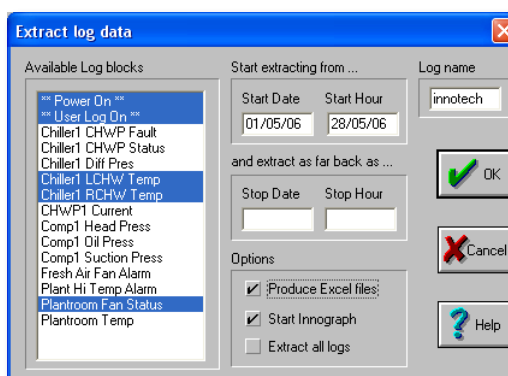
Using this information, you can stop the extraction at any time and use the data collected so far. **Gen2Xtract** displays the number of records in the log history data which have been scanned, and the number of records which have matched your search criteria.

## Complete Software Support

**Gen2Xtract** can produce data files in standard formats, such as CSV. However, there are few products on the market which can easily handle the large number of values able to be logged by the Genesis II Digital Controller in a single display (up to 300 thousand full-decimal values). Innotech has solved this problem by producing its own Graphing package called **InnoGraph**, designed specifically for handling the large quantity of data points produced by the Genesis II.

## Complete Networking Support

**Gen2Xtract** is designed to work not only a single Genesis II Digital Controller, but also over a network of Genesis II Digital Controllers. It allows you to extract data from any Genesis II Digital Controller on a network, and even allows you to easily dial-in to a Genesis II Digital Controller over a modem and extract data.



# INNOTECH®

Australian Owned, Designed & Manufactured  
by Mass Electronics Brisbane

Phone: +61 7 3421 9100 Fax: +61 7 3421 9101  
Email: [sales@innotech.com.au](mailto:sales@innotech.com.au) [www.innotech.com.au](http://www.innotech.com.au)

YOUR DISTRIBUTOR