



## Gen2Simulator

## Genesis II Digital Controller Software Simulator

### Overview

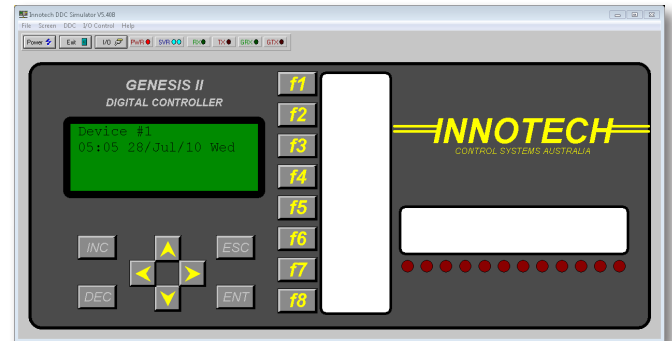
**Gen2Simulator** is Windows® based software that simulates an Innotech® Genesis II Direct Digital Controller, or Genesis II Mid Points Controller .

The virtual Genesis II Controller can be powered on, configured and interrogated in the same way as a physical device. Configurations can be downloaded and checked without requiring any hardware installation.

**Gen2Simulator** can be used in conjunction with any product from the Genesis Software range.

### Features

- Genesis II Digital Controller front panel simulation
- Simulation of Genesis II Direct Digital Controller or Genesis II Mid Points Controller processing
- I/O monitoring and control
- Transparent support for all Innotech software packages
- Panel label display reflects configuration
- Easy to use interface - no special training required



### Applications

- Designing and testing configurations

### Supported Operating Systems:

- Windows® 7 Professional 64-bit & 32-bit
- Windows® XP Professional 32-bit with Service Pack 3

### Minimum System Requirements:

- Intel® Pentium® 2.8GHz dual core processor or equivalent
- 2GB of RAM
- 80GB Hard Disk Drive
- 1024 x 768 display with 16-bit video card
- CD-ROM or DVD-ROM drive
- Keyboard and Microsoft® mouse or compatible pointing device
- Requires a computer with iComm software installed
- Requires customer registration on installation
- Upgrade versions available on request

This page has been left intentionally blank.

---

**INNOTECH®**

Australian Owned, Designed & Manufactured  
by Mass Electronics Brisbane

**Phone:** +61 7 3421 9100 **Fax:** +61 7 3421 9101  
**Email:** [sales@innotech.com.au](mailto:sales@innotech.com.au) [www.innotech.com.au](http://www.innotech.com.au)

YOUR DISTRIBUTOR