



Gen2Monitor

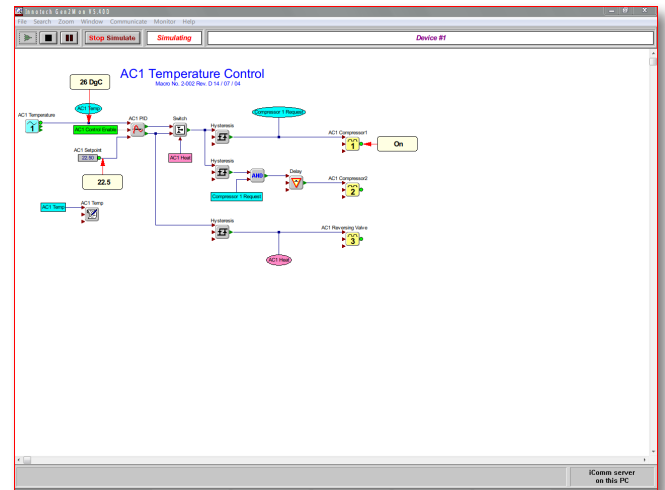
Monitoring and Debugging Utility for Genesis II Digital Controllers

Overview

Gen2Mon is a monitoring and debugging utility designed to help with commissioning and troubleshooting a Genesis II Digital Controller. It displays the configuration from a Genesis II Digital Controller and allows the user to inspect, trend or modify the value at any of the points in the configuration while the controller is running.

Features

- Allows inspection of the value at any point on the configuration simply hovering over the point of interest with the mouse
- Full zooming and panning of your display
- Trending of up to 5 values simultaneously in separate windows
- Values at any point in the configuration can be displayed in a separate window which is updated continuously. Up to 128 of these windows can be visible on the screen at any time
- Facility to pause monitoring and freeze all values displayed on the screen for analysis, including trend windows. When monitoring is re-started, the trend windows are updated with all information accumulated during the pause.
- Simulation facility to simulate the value of Inputs on the controller - a feature which is essential in this type of application
- All major Genesis II communications functions are supported, including System Settings, Password change, Network test and Network searching
- Consistent in operation and display with the Gen2Config configuration utility
- Full support for dial-in remote access via a modem or network connection
- Very comprehensive on-line help and user documentation
- Disk caching used to speed up transfer to and from Genesis II Digital Controllers
- Allows internal configuration of any block on the configuration, even while the controller is still running



Applications

- Inspection and trending of variables and I/O points within a Genesis II controller during operation
- Debugging and tuning of a Genesis II Digital Controller configuration during operation
- Simulation and/or calibration of Genesis II Digital Controller inputs
- Changing system variables

System Requirements

Supported Operating Systems:

- Windows® 7 Professional 64-bit & 32-bit
- Windows® XP Professional 32-bit with Service Pack 3

Minimum System Requirements:

- Intel® Pentium® 2.8GHz dual core processor or equivalent
- 2GB of RAM
- 80GB Hard Disk Drive
- 1024 x 768 display with 16-bit video card
- CD-ROM or DVD-ROM drive
- Keyboard and Microsoft® mouse or compatible pointing device
- Requires a computer with iComm software installed
- Requires customer registration on installation
- Upgrade versions available on request

Simulate Inputs with Gen2Mon

Gen2Mon allows the user to simulate the value of any of its Analogue or Digital inputs. With the click of a mouse button, you can artificially raise or lower the room temperature input to the Genesis II Digital Controller and analyse how your configuration handles the change. Alternatively, you can instantly force a digital input ON or OFF. The simulation facility will play an important role in the real-time fine-tuning.

Calibrate Inputs with Gen2Mon

Gen2Mon provides the facility to adjust the internal settings of any block on the configuration while the Genesis II Digital Controller is running. You can easily calibrate the Analogue input parameters within seconds of measuring the values and immediately see the results.

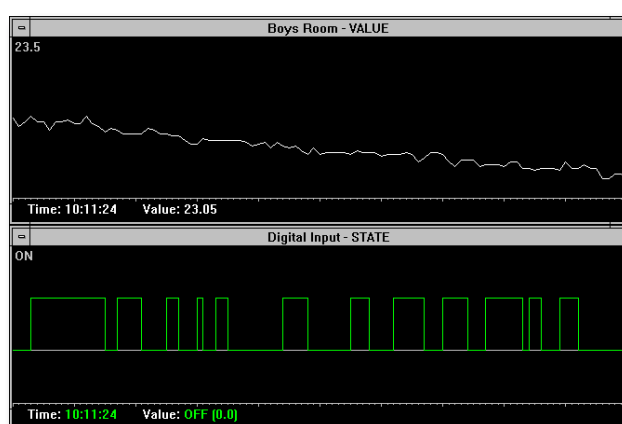
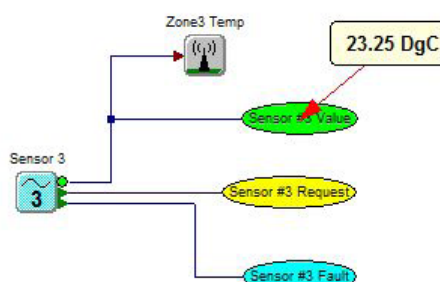
Trend Values with Gen2Mon

Any point on your configuration can be trended to graphically display a running history of its value. The trend graph for a point can be set to display in either digital or analogue mode, and the trend window can easily be moved, re-sized, re-scaled or re-coloured! You can even move your cursor along any point in the trend window and see the value at that point in time.

Full Networking Support

Gen2Mon is designed to work with not only a single Genesis II Digital Controller, but also a network of Genesis II Digital Controllers. It allows you to view a list of Genesis II Digital Controllers currently on the network and communicate with any one of them.

Zone #3 - Conference Room (rear)



Debug Configurations

Using a user-friendly GUI interface, Gen2Mon allows you to easily view and modify the configuration of your Genesis II Digital Controllers. You can easily inspect any configuration values and modify the internal settings of any of the blocks - all while the controller is in operation! If you discover that an output is not functioning correctly, you can trace through your configuration to easily find the point of failure.

INNOTECH®

Australian Owned, Designed & Manufactured
by Mass Electronics Brisbane

Phone: +61 7 3421 9100 Fax: +61 7 3421 9101
Email: sales@innotech.com.au www.innotech.com.au

YOUR DISTRIBUTOR