



Gen2DDE

Dynamic Data Exchange Server for Genesis II Digital Controllers

Overview

Gen2DDE is a Dynamic Data Exchange server used by all Genesis II Digital Controller software to communicate with a Genesis II Digital Controller. It supports a two-tiered command set comprising user-level commands for third party applications, and system-level commands for purpose built custom applications.

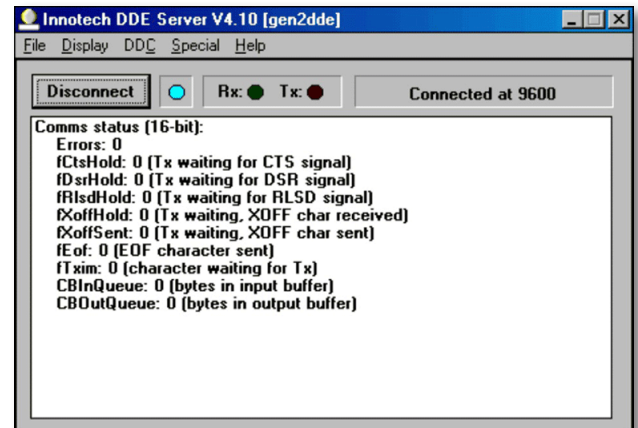
Other programs may use Gen2DDE when they want to communicate with a Genesis II Digital Controller either directly or over a network of Genesis II controllers.

Features

- Functions which allow access and modification of any point within a Genesis II Digital Controller
- Support for DDE Hot links and Cold links
- Error message display
- Configuration of communications port on PC
- Dynamic caching of Genesis II Digital Controller block information for fast access of points data
- Active icon display showing current state of server
- Ability to configure low-level communications protocol settings

Applications

- Communicating with one or more Genesis II Digital Controllers with third party software
- Communicating with one or more Genesis II Digital controllers using custom-written software



Specifications

- Distributed on one CD as a standalone package, or distributed free as part of Gen2Config, Gen2Mon, Gen2Supervisor or Gen2Xtract
- Requires Windows 98, NT, 2000 or XP
- Requires a minimum of a Pentium® CPU with 10Mb free disk space and 32Mb RAM
- Requires customer registration on installation
- Upgrade versions available on request

This page has been left intentionally blank.

INNOTECH®

Australian Owned, Designed & Manufactured
by Mass Electronics Brisbane

Phone: +61 7 3421 9100 **Fax:** +61 7 3421 9101
Email: sales@innotech.com.au www.innotech.com.au

YOUR DISTRIBUTOR