



Gen2Config

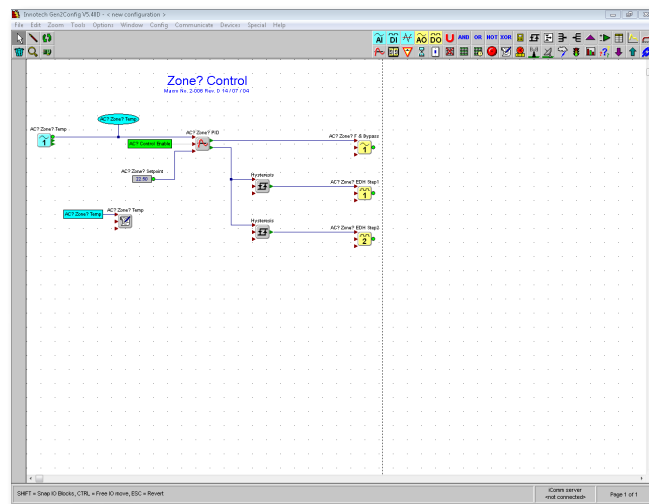
Graphical Configuration Utility for Genesis II Digital Controllers

Overview

Gen2Config is the configuration tool for Innotech® Genesis II Digital Controllers. Gen2Config allows you to internally configure a Genesis II Direct Digital Controller or a Genesis II Mid Points Controller by using a simple point-and-click approach on a computer with supported Windows® operating systems.

Features

- 40 function block types, ranging from a simple OR gate to a more complex Scheduler or PID function
- Free text available to clarify parts of your configuration
- Auto-routing of line connections
- Comprehensive colour and options configuration
- Supports use of labels to reduce direct line connections
- Automatically saves your work in a backup file
- Macro facility allows pasting of pre-drawn sections of a configuration
- Produces estimates of Genesis II Digital Controller resources required by a configuration
- Provides a graphical printout of your configuration in colour or monochrome
- Uses context-sensitive line colours to aid in the detection of design errors
- Prints Genesis II Digital Controller wiring diagram automatically from your configuration
- Fully featured built-in Analogue Input sensor configuration utility
- Automatically prints materials listing
- Powerful search and replace mechanism for objects in your configuration
- Allows zooming and panning of your display
- Full support for dial-in remote access via a modem or network connection
- Comprehensive on-line help and user documentation
- Uses disk caching to speed up transfer to and from the Genesis II Digital Controllers
- Includes facility to export wiring diagrams to standard WMF format for CAD packages



Applications

- Internal configuration of the Innotech Genesis II Direct Digital Controller or Genesis II Mid Points Controller
- Configuration of modem connected directly to a Genesis II Digital Controller
- Network testing of a Genesis II Digital Controller network
- Configuration of the Innotech Modem Printer Interface

System Requirements

Supported Operating Systems:

- Windows® 7 Professional 64-bit & 32-bit
- Windows® XP Professional 32-bit with Service Pack 3

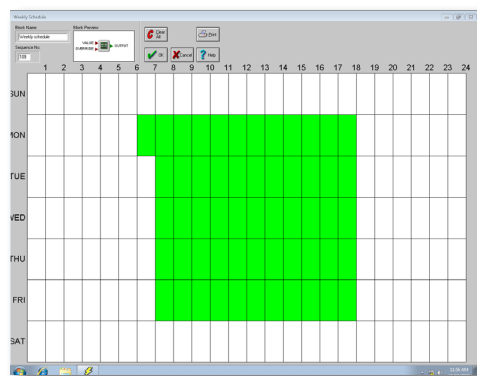
Minimum System Requirements:

- Intel® Pentium® 2.8GHz dual core processor or equivalent
- 2GB of RAM
- 80GB Hard Disk Drive
- 1024 x 768 display with 16-bit video card
- CD-ROM or DVD-ROM drive
- Keyboard and Microsoft® mouse or compatible pointing device
- Requires a computer with iComm software installed
- Requires customer registration on installation
- Upgrade versions available on request

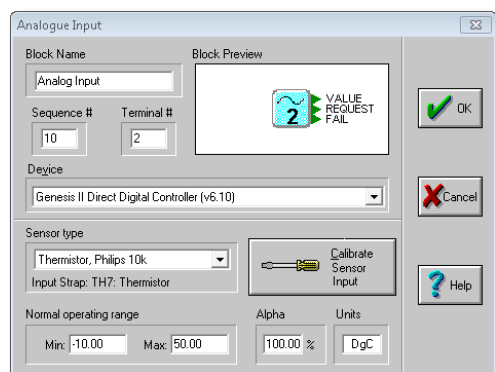
Simple Yet Powerful!

Gen2Config uses block programming to program configurations for the Genesis II Digital Controllers. The configuration specifies which inputs of the Genesis II controller are related to which outputs and how these will be processed internally using I/O blocks.

Within minutes, you can construct a fully-featured control program and transfer it to your Genesis II Digital Controller. **Gen2Config** is also capable of retrieving a configuration from any Genesis II Digital Controller and displaying it on a PC monitor to be visually analysed and edited.



Some blocks are configured differently to others...



Gen2Config contains a wide variety of control functions, ranging from the simple digital logic functions of AND, OR and NOT to more complex blocks such as a scheduler, timer or humidity calculation. In all, the 40 blocks available can be combined in countless ways to produce configurations tailored precisely to your needs.

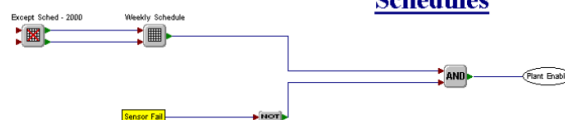
Easily Configure Your Blocks

Just double-click on any of the blocks in your configuration, and the block dialogue box will allow you to precisely tune the operation of the block.

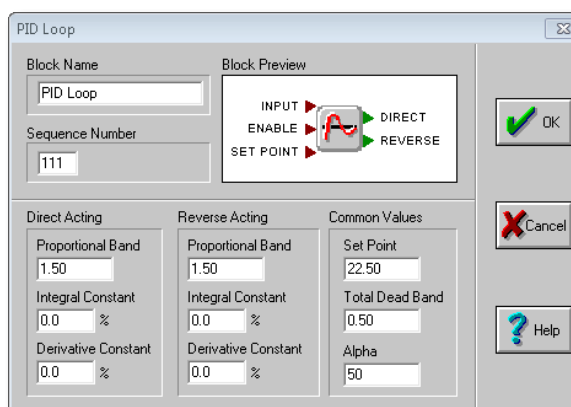
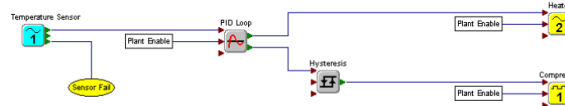
Full Networking Support

Gen2Config is designed to work with not only a single Genesis II Digital Controller, but also a network of Genesis II Digital Controllers. It allows you to view a list of controllers currently on the network and communicate with any one of the Genesis II controllers.

Schedules



Control Loop



INNOTECH®

Australian Owned, Designed & Manufactured
by Mass Electronics Brisbane

Phone: +61 7 3421 9100 Fax: +61 7 3421 9101
Email: sales@innotech.com.au www.innotech.com.au

YOUR DISTRIBUTOR