



## Graphical Configuration Utility for the BACnet Gateway

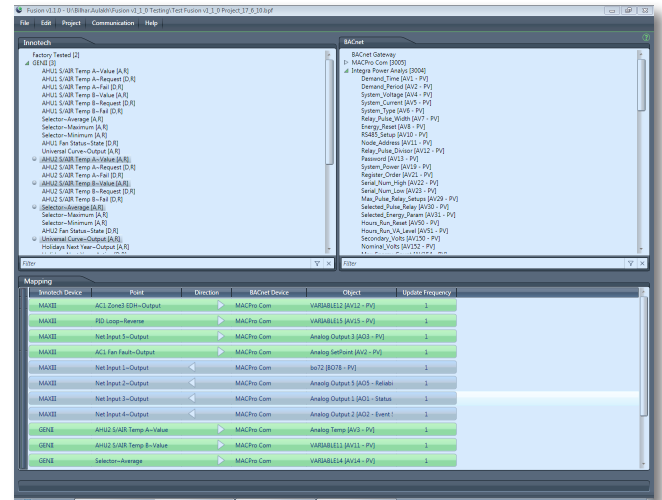
### Overview

Fusion is the configuration and mapping utility for programming the Innotech® BACnet Gateway. The BACnet Gateway acts as a bridge between the Innotech and BACnet networks.

Fusion is Windows® based software providing a user friendly interface for the simple creation of complex mappings between Innotech Points and BACnet Devices and Objects.

### Features

- Simple drag and drop approach to creating mappings between Innotech Points and BACnet Objects
- Visual representation of BACnet Gateway mappings
- Import Innotech Points directly from a Genesis, MAXIM or Fusion project file, or directly from an Innotech network through iComm
- Import BACnet Objects directly from a Fusion project file, or from a BACnet network through iComm
- Supports BACnet addresses 0 to 4,194,302



### Applications

- Internal configuration of the Innotech BACnet Gateway
- Create mappings between Innotech Points and BACnet Devices and Objects

### System Requirements

#### Supported Operating Systems:

- Windows® Server 2012 R2
- Windows® Server 2008 R2 with service pack 1
- Windows® 10 Professional 64-bit & 32-bit
- Windows® 8.1 Professional 64-bit & 32-bit
- Windows® 7 Professional 64-bit & 32-bit with service pack 1

#### Minimum System Requirements:

- Intel® Pentium® 2.8GHz dual core processor or equivalent
- 4GB of RAM
- 250MB Hard Disk Drive space required
- 1024 x 768 display with 16-bit video card
- CD-ROM or DVD-ROM drive
- Keyboard and Microsoft® mouse or compatible pointing device
- Requires a computer with iComm 1.9 or greater installed

This page has been left intentionally blank.

---

**INNOTECH®**

Australian Owned, Designed & Manufactured  
by Mass Electronics Brisbane

**Phone:** +61 7 3421 9100 **Fax:** +61 7 3421 9101  
**Email:** [sales@innotech.com.au](mailto:sales@innotech.com.au) [www.innotech.com.au](http://www.innotech.com.au)

YOUR DISTRIBUTOR