



## Web-based Magellan Explorer

### Overview

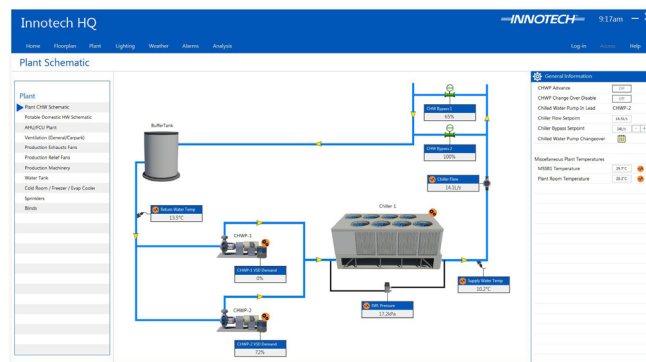
**eServer** is a multi-seat web-based Magellan Explorer solution that allows remote PCs to display a Magellan Explorer interface from within their web browser, while accessing information on a remote PC.

In conjunction with a client-side downloaded ActiveX control plug-in, eServer allows remote clients using a web browser to download and display frames of a Magellan project through a network or internet connection without needing a local copy of that project.

### Features

**eServer** is bundled with the **MagellanX** ActiveX control required for download onto a client web browser, and offers the following advantages over the Magellan Explorer program:

- Users do not need to have a licence for Magellan Explorer on their PC – they simply log on to a web site which automatically downloads the **MagellanX** ActiveX control and starts a session with a remote **eServer**
- Only one copy of the Magellan project file (.mag) needs to be stored and maintained on the server
- All audit logging is carried out on the server PC giving a centralised audit trail repository
- The interface presented with **MagellanX** is no different to using the Magellan Explorer program itself
- Updates to the master project file are automatically recognised by the clients next time they connect to **eServer**
- Protected with a security key and shipped standard with support for concurrent connections over a network or internet connection depending on version
- Efficient interaction between client and server ensures only the required components of the Magellan project are transferred to the client
- Client-side caching ensures that graphical images are only transferred if they have not previously been accessed by the client
- Integrated support for Crystal Reports
- Relational database support for Microsoft® SQL Server® 2016 R2 Express Edition, Microsoft® SQL Server® 2008 R2 Express Edition.
- Display Historic Trend information via **Innotech® Chronicle Server**, with support for up to 100 SQL Server database connections in a project (not-concurrent)
- Can be configured to use SSL Certificates and https



### Supported Operating Systems:

- Windows® Server 2012 R2
- Windows® Server 2008 R2 with Service Pack 1
- Windows® 10 Professional 64-bit & 32-bit
- Windows® 7 Professional 64-bit & 32-bit with Service Pack 1

### Minimum System Requirements:

- Intel® Pentium® 2.8GHz dual core processor or equivalent
- 4GB of RAM
- 350MB Hard Disk Drive space required
- 1920 x 1080 display with 16-bit video card for standard graphics
- USB Port
- Keyboard and Microsoft® mouse or compatible pointing device
- Requires a computer with iComm software installed

### eServer Products

- eServer 10 seat: 10 client connection with no point limit

### eServer Products

Order Code	Programs Included		
	Magellan Builder	Magellan Explorer	eServer
<b>eServer</b> (Unlimited points)	X	✓	✓ (10 seat license)

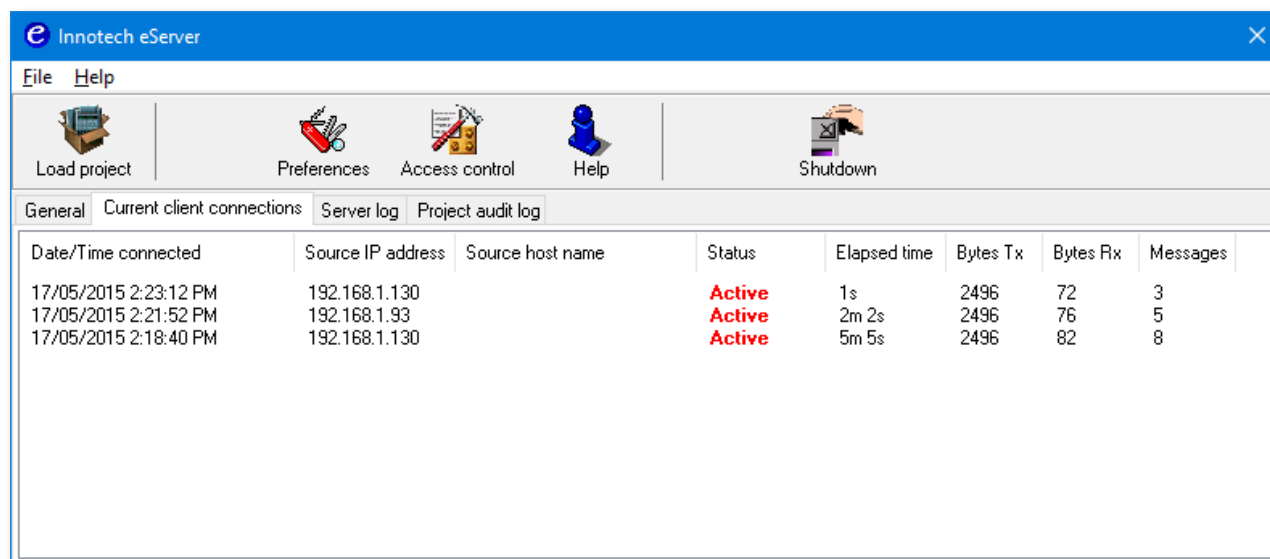
### Specifications

- Distributed on CD with an electronic security key for software protection
- Includes necessary ancillary files and optional add-on components
- Requires firewall access to **eServer** port 20001 and port 80 on eServer PC
- Requires firewall access to **iComm** port 20000 on iComm Server PC
- Requires Microsoft Internet Explorer® 11
- Does not support Magellan projects which interact with OPC devices
- Shipped with **MagellanX** ActiveX control and sample web-page

**i** This product includes software developed by the OpenSSL Project for use in the OpenSSL Toolkit. (<http://www.openssl.org/>)

## Architecture

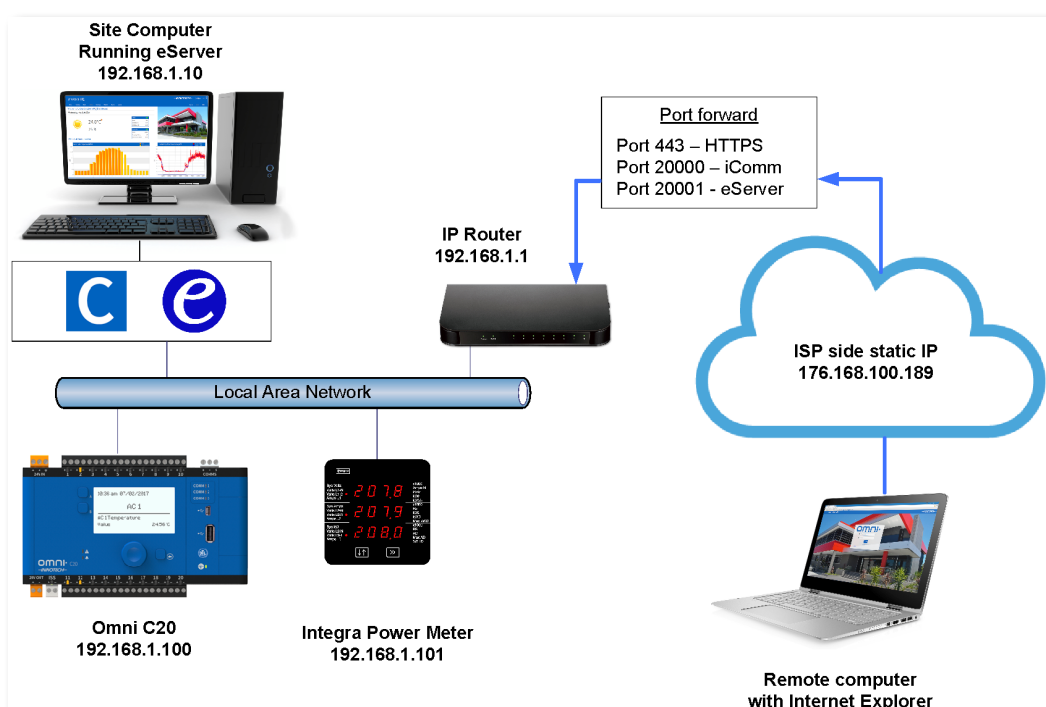
**eServer** runs continuously on a host PC and is always loaded with a single **Magellan** project created using **Magellan Builder**. **eServer** accepts connections from end users through a web browser via the **MagellanX** plug in. As the user navigates through the **Magellan** frames in the web-browser, **eServer** downloads the necessary sections of the project to the **MagellanX** plug in as required.



The screenshot shows the Innotech eServer application window. It has a menu bar with 'File' and 'Help'. Below the menu is a toolbar with icons for 'Load project', 'Preferences', 'Access control', 'Help', and 'Shutdown'. The main window has tabs for 'General', 'Current client connections', 'Server log', and 'Project audit log'. The 'Current client connections' tab is active, displaying a table of connections.

Date/Time connected	Source IP address	Source host name	Status	Elapsed time	Bytes Tx	Bytes Rx	Messages
17/05/2015 2:23:12 PM	192.168.1.130		Active	1s	2496	72	3
17/05/2015 2:21:52 PM	192.168.1.93		Active	2m 2s	2496	76	5
17/05/2015 2:18:40 PM	192.168.1.130		Active	5m 5s	2496	82	8

Sample eServer client connection window with three concurrent connections



Example eServer Network Topology

# INNOTECH®

Australian Owned, Designed & Manufactured  
by Mass Electronics Brisbane

Phone: +61 7 3421 9100 Fax: +61 7 3421 9101  
Email: [sales@innotech.com](mailto:sales@innotech.com) [www.innotech.com](http://www.innotech.com)

YOUR DISTRIBUTOR