



Overview

Chronicle is a comprehensive Database and Event Management Server for Innotech® Networks. Chronicle consists of two software applications: the configuration tool, Chronicle Manager, and the runtime service, Chronicle Server.

Chronicle Server can be rapidly configured to provide fast and robust logging of points from an Innotech iComm Server directly into a supported SQL Server database.

Features

- Simple drag and drop approach to creating projects
- Chronicle Server runs discreetly in the background as a Windows® Service, supporting multiple user login and automatic initialisation at computer startup
- Supports logging of points based on value change and/or scheduled intervals throughout the day
- Chronicle Manager includes an integrated monitoring tool, allowing for the real-time monitoring of logged point data in your SQL Server database
- Easily filter points and print a summary of your project
- Compatible with points and objects on all iComm connection types; including Innotech Points and BACnet Objects
- Simple automated installation program installs both Chronicle Server and the default bundled Microsoft® SQL Server® 2016 Express Edition database
- Configure scheduled backups, and restore the database from a backup file if required
- Chronicle Server is monitored by **Innotech iSEA** software
- Comprehensive online help included with Chronicle Manager
- Supports BACnet addresses 0 to 4,194,302

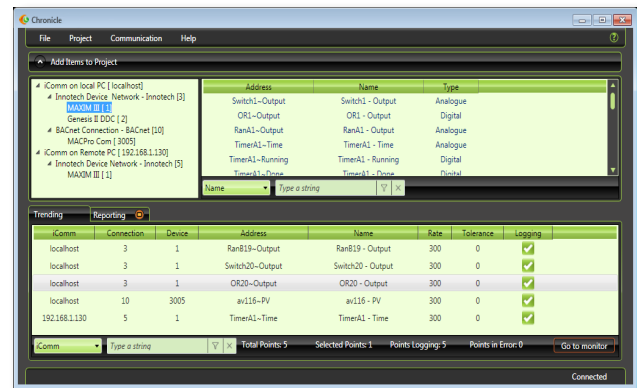
Specifications

- Microsoft .NET™ Framework (v4.0 or later) is included and will be installed as required during Chronicle Manager or Server setup
- Requires a SQL Server database for point logging
(Refer below for supported versions)
- Requires **Innotech iComm Server** to access devices

Supported SQL Server Databases

Chronicle Server is supported by the following SQL Server databases:

- Microsoft SQL Server 2016 Express Edition



Applications

- Configure the Chronicle Server to record point data directly from an Innotech iComm Server into a supported SQL Server database - either on the same computer or from an accessible network location
- Record point data based on value change - configure update rates and tolerances as required
- Record point data at scheduled intervals; every 5, 10, 15 or 30 minutes, or once per hour
- Monitor the status and value of point data in real-time when using Chronicle Manager's monitor mode
- Filter your list of points, and print reports as required
- Record point data from all iComm connection types; including Innotech Points and BACnet Objects
- Connect to multiple iComm Server computers on your network

Supported Operating Systems

- Windows® 10 64-bit
- Windows® Server 2012 R2
- Windows® Server 2016
- Windows® Server 2019

i Windows 10 builds are supported for approximately 18 months after release. It is recommended that you should upgrade your operating system if using an unsupported build.

Minimum System Requirements

- Intel® Pentium® 2.8GHz dual core processor or better
- 4GB of RAM
- Up to 15GB Hard Disk Drive space required (version dependent)
- 1024 X 768 display with 16-bit video card
- Keyboard and mouse or compatible pointing device

Recommended System Requirements

- Intel quad core processor 2.93GHz or faster
- 4GB of RAM
- 2 x 80GB Hard Disk Drives configured as RAID 1
- Uninterruptible Power Supply (UPS) for the site computer
- 1024 X 768 display with 16-bit video card
- Keyboard and mouse or compatible pointing device


This page has been left intentionally blank.



Australian Owned, Designed & Manufactured
by Mass Electronics Brisbane

@ sales@innotech.com

 www.innotech.com

 +61 7 3421 9100

© MASS ELECTRONICS Pty Ltd 2010

INNOTECH and the INNOTECH logo are registered and unregistered trademarks of Mass Electronics Pty Ltd in Australia, the USA and other countries.