

Models:

SENW22: Detector External Adj. 4° C
SENW25: With After Hours Switch
SENW25L: With After Hours Switch and LED
SENW26: Detector and Remote Adjuster
SENW27: Detector External Adj. 4° C with After Hours Switch

SENW22, SENW25x, SENW26, and SENW27 Wall Mounted Temperature Detectors

Overview

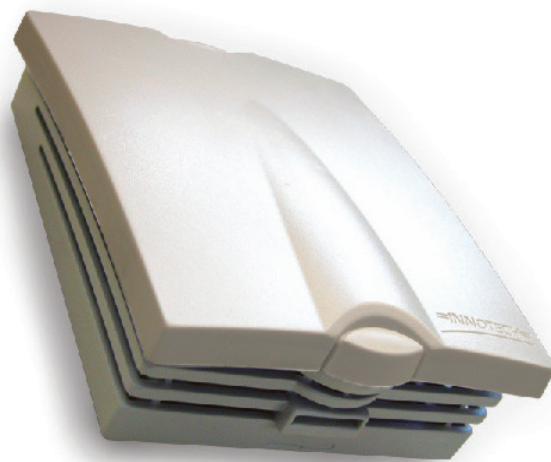
The SENW2x Series are wall mounted temperature detectors designed to work with other Innotech products.

Features

- Detectors are interchangeable
- Not polarity sensitive
- Attractive low profile case blends with any decor
- Cover secured by positive locking clip
- Mounting screws are invisible

Applications

The SENW22, SENW25x, SENW26, and SENW27 temperature detectors are designed to work with Innotech IMT, IWP, IWC, MT01, MTC, ES3, M2K, MS1, MS5, MAXIM, and Genesis II range of controllers.

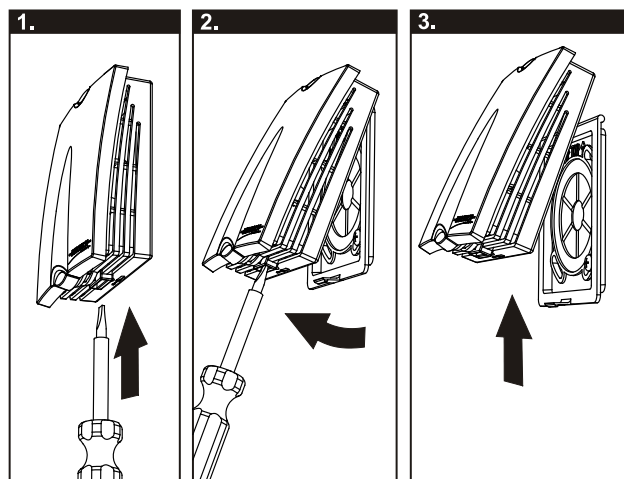


Installation

1. Mount the base to the wall with four screws through the holes provided in the base of the case.
 - Ensure that the word "TOP" is to the top
 - Innotech can supply an adapter plate suited for retrofitting older Innotech wall mounter temperature detectors. Contact your Innotech distributor for more information
2. Wire in accordance with Innotech connection diagrams and local bylaws. Refer to your local distributor for more information.
3. Seal the hole in the wall after wiring to prevent errors in the measured temperature
4. Fit the cover by placing the top edge of the cover over the tab on the top of the base and then pressing the bottom middle of the cover to the wall. A firm click indicates that the cover is securely fixed

Removing The Cover

1. Insert a screwdriver into the protruding screwdriver slot on the bottom of the case, gently pushing to disengage the clip
2. Gripping the lower sides of the case, pivot the bottom of the case from the wall
3. Gently push the case up. It should easily become free of the base plate



Specifications

OPERATING MODE

10K Ω Thermistor

ENVIRONMENTAL

Operating Temperature 0°C to 50°C non-condensing

Storage Temperature 0°C to 50°C non-condensing



The operating temperature range depends on the Innotech controller to which the SENWxx temperature detector is connected.

ENCLOSURE

Housed in a rectangular case suitable for wall mounting. Housing molded from flame retardant plastics recognized by UL as UL94-V0.

Colour White / Light Grey

Dimensions (Maximum) (W)91mm x (H)72mm x (D)32mm

APPROVALS

Conforms to the requirements for RCM Labelling.

Wiring

Shielded cable should be used for wiring. The shield should be continuous from the detector to the ground terminal of the controller.

It is good practice to maintain at least 50mm clearance between product wiring and power wiring.

Use of the After Hours Switch

The SENW25, SENW25L, and SENW27 series products feature an After Hours switch, which is designed for use with the Innotech Genesis or MAXIM range of controllers.

Pressing the After Hours switch creates an interruption in the reading of the thermistor sensor. This interruption is detected by the connected Genesis or MAXIM controller.

The Genesis or MAXIM series controller can utilise this information as part of its programmed configuration.



Use of the After Hours Switch requires the SENW25, SENW25L, and SENW27 products to be used with the Innotech Genesis or MAXIM series of digital controllers.

LED Operation

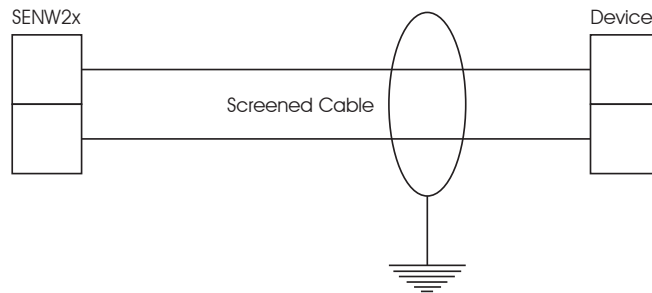
The SENW25L features an LED which is powered by a 10V DC input. The LED is only visible when active.

The SENW25L LED functionality is designed for use with the Genesis and MAXIM range of digital controllers.

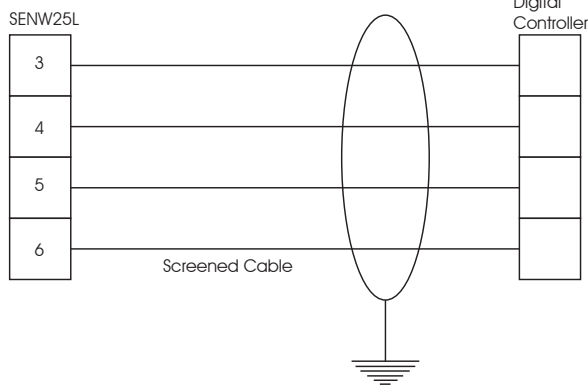
- Blue coloured LED
- 10VDC signal only
- Invisible when in standby mode

Standard Connection Diagrams

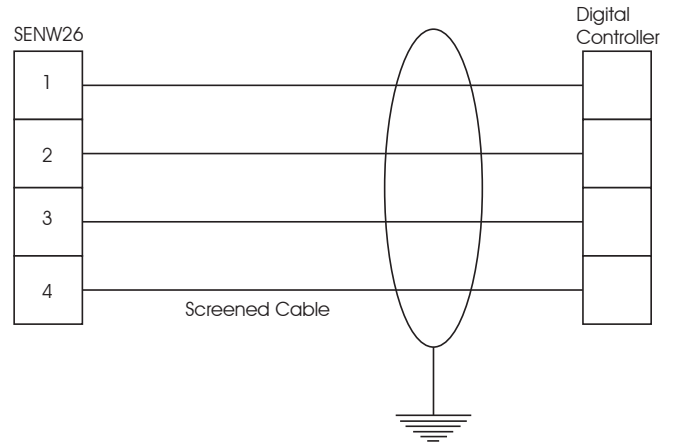
SENW22, SENW25, SENW27 Connection



SENW25L Connection



SENW26 Connection



Terminal Identification For SENW25L

Sensor

- 3 Thermistor
- 4 Thermistor

LED

- 5 LED Activation +10VDC Input
- 6 LED Activation 0VDC Common

Terminal Identification For SENW26

Sensor

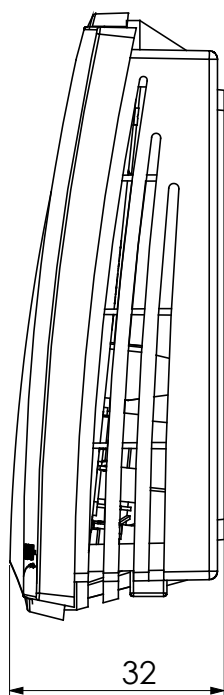
- 3 Thermistor
- 4 Thermistor

Adjuster

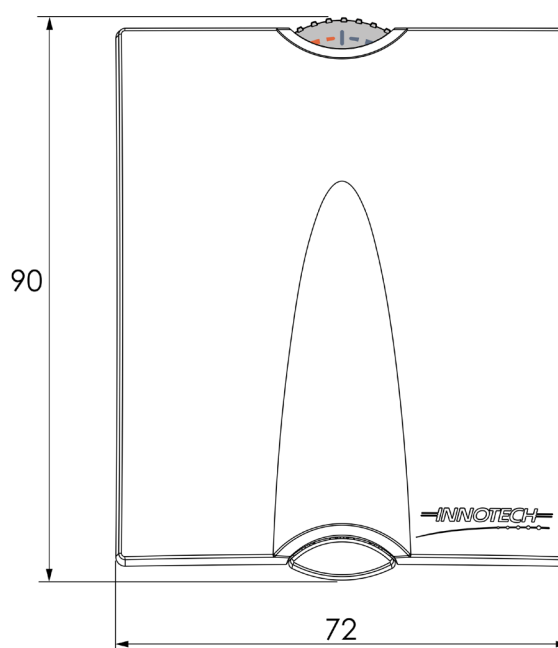
- 1 Setpoint Adjustment
- 2 Setpoint Adjustment

Dimensional Diagrams

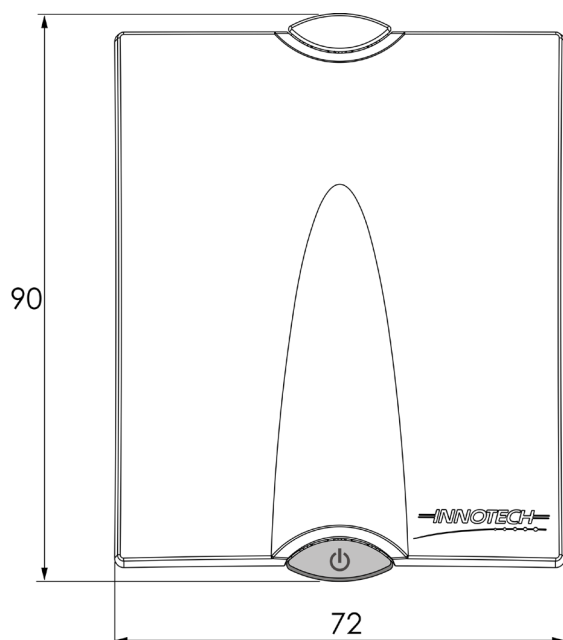
ALL MODELS



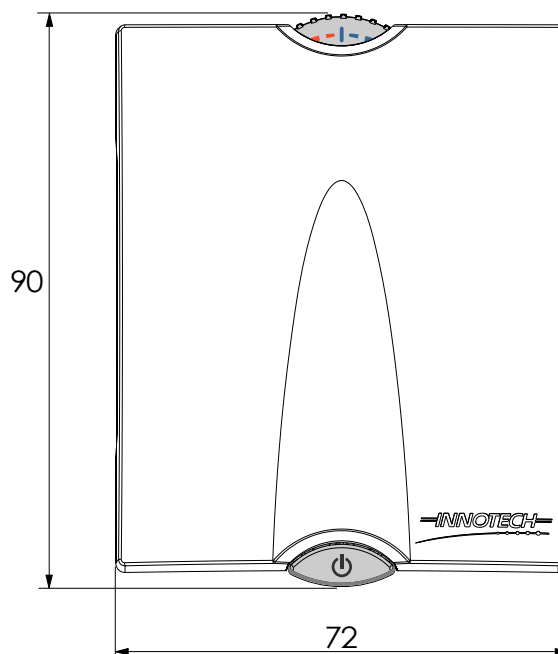
SENW22 / SENW26



SENW25 / SENW25L



SENW27



INNOTECH®

Australian Owned, Designed & Manufactured
by Mass Electronics Brisbane

Phone: +61 7 3421 9100 Fax: +61 7 3421 9101
Email: sales@innotech.com www.innotech.com

© MASS ELECTRONICS Pty Ltd 2011

YOUR DISTRIBUTOR