

MODELS

SENW21: Wall Mounted Detector
SENW21A: Averaging Wall Mounted Detector

SENW21x

Wall Mounted Temperature Detectors

Specifications

Operating mode

- 10k ohm Thermistor

Temperature Ratings

- Storage: 0-50°C non-condensing
- Operating: 0-50°C non-condensing

i The operating range of the sensor is dependent on the controller it is connected to; refer to the relevant datasheets for further detail.

Enclosure

The SENW21x series products are housed in a stylish rectangular case suitable for wall mounting. The housing is moulded from flame retardant plastics recognised by UL as UL94-V0.

Colour: white/light grey.

Dimensions: 91mm(h) x 72mm(w) x 32mm(d).

Installation

1. Mount the base to the wall with four screws through the holes provided in the base of the case.

i Ensure that the word "TOP" is to the top.
- i** Innotech® can supply an adapter plate suited for retrofitting previous versions of the Innotech Wall Mounted Temperature Detector range. Contact your Innotech distributor for more information
2. Wire in accordance with Innotech connection diagrams and local bylaws, or refer to your local distributor.
3. Seal the hole in the wall after wiring to prevent errors in the measured temperature.
4. Fit the cover by placing the top edge of the cover over the tab on the top of the base and then pressing the bottom middle of the cover to the wall. A firm click indicates that the cover is securely fixed.

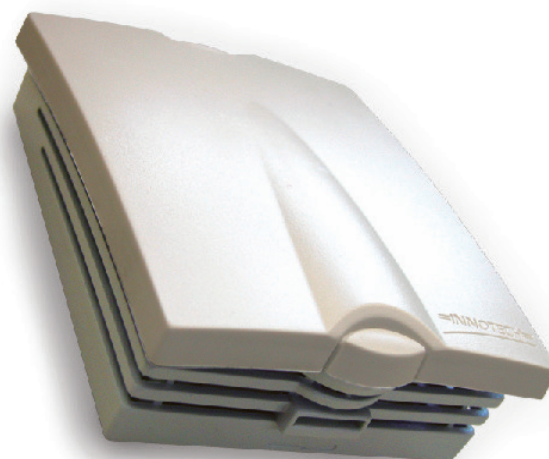
Wiring

Shielded cable should be used. The shield should remain continuous from the detector to the ground terminal of the controller.

It is good practice to maintain at least 50 millimetres clearance between product wiring and power wiring.

Approvals

The Innotech SENW21x series temperature detectors conform to the requirements for RCM Labelling.



Applications

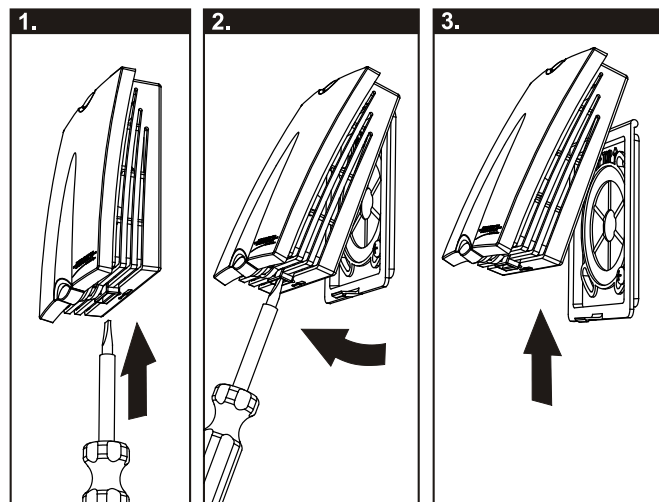
The SENW21x temperature detectors are designed for use with Innotech IMT, IWP, IWC, MT01, Maxim, Genesis II and Omni range of controllers.

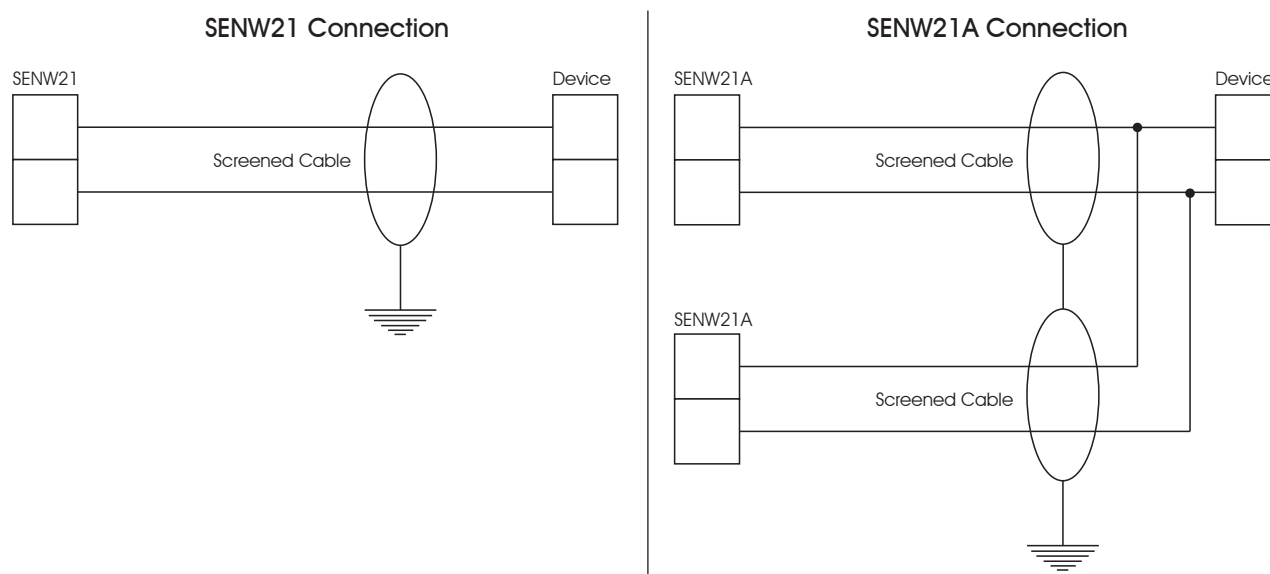
Features

- Detectors are interchangeable
- Not polarity conscious
- Attractively styled low profile case blends with any decor
- Cover secured by positive locking clip
- No unsightly screws

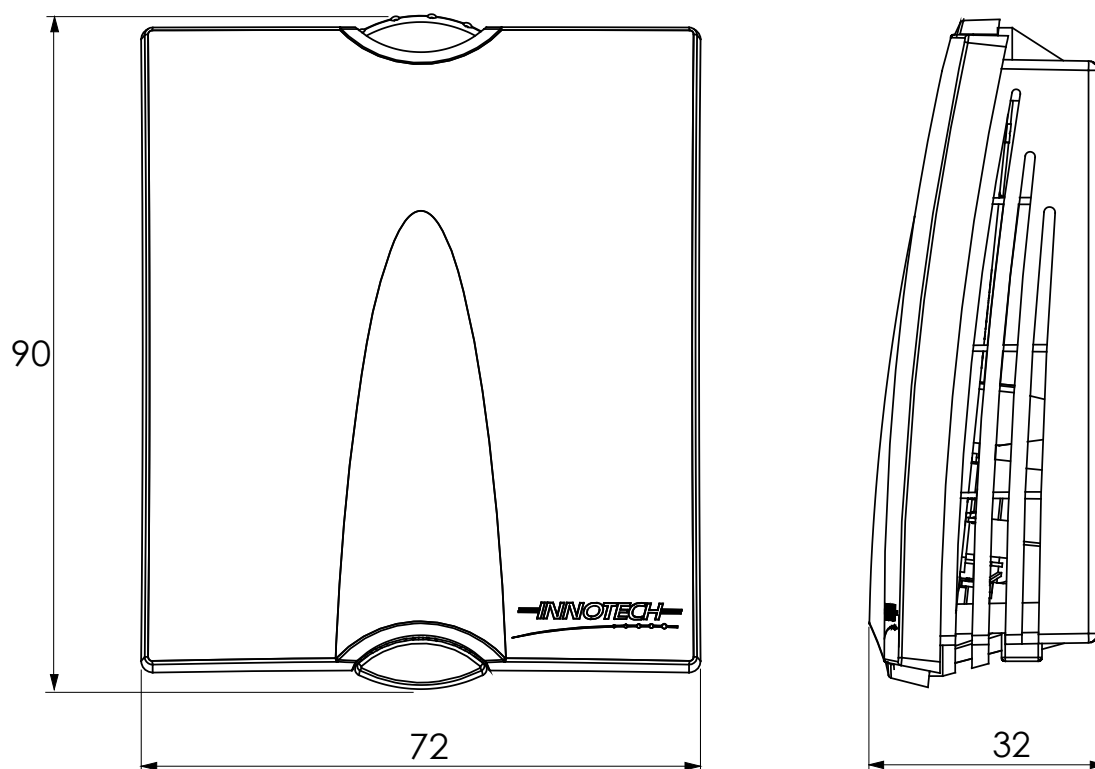
Removing The Cover

1. Insert a screwdriver into the protruding screwdriver slot on the bottom of the case, gently pushing to disengage the clip.
2. Gripping the lower sides of the case, pivot the bottom of the case from the wall.
3. Gently push the case up. It should easily become free of the base plate.





Dimensional diagram



INNOTECH®

Australian Owned, Designed & Manufactured
by Mass Electronics Brisbane

Phone: +61 7 3421 9100 **Fax:** +61 7 3421 9101
Email: sales@innotech.com www.innotech.com

YOUR DISTRIBUTOR