

**MODEL:**

ITW6001: Standard Model  
ITW6002: Limited Adjustment - External 6°C  
ITW6002-2: Limited Adjustment - External 2°C

**ITW600x****Wall Mounted Temperature Detectors****Specifications****Operating voltage**

- 12 V to 30 VDC
- 35 VDC Max

**Operating mode**

- Two wire current loop.
- Calibration: Within  $\pm 0.25^{\circ}\text{C}$  of reference at  $24^{\circ}\text{C}$

**Temperature ratings**

- Storage: 0 to  $50^{\circ}\text{C}$  non condensing
- Operating: 0 to  $50^{\circ}\text{C}$  non condensing

**Enclosure**

The ITW600x products are housed in a stylish rectangular case suitable for wall mounting. The housing is moulded from flame retardant plastics recognised by UL as UL94-V0


**Colour:** white/light grey

**Dimensions:** 91mm(h) x 72mm(w) x 32mm(d)

**Installation**

1. Mount the base to the wall with four screws through the holes provided in the base of the case.

 Ensure that the word "TOP" is to the top.

 Innotech<sup>®</sup> can supply an adapter plate suited for retrofitting previous versions of the Innotech Wall Mounted Temperature Detector range. Contact your Innotech distributor for more information.

2. Wire in accordance with Innotech connection diagrams and local bylaws or refer to your local distributor.
3. Seal the hole in the wall after wiring to prevent errors in the measured temperature.
4. Fit the cover by placing the top edge of the cover over the tab on the top of the base and then pressing the bottom middle of the cover to the wall. A firm click indicates that the cover is securely fixed.

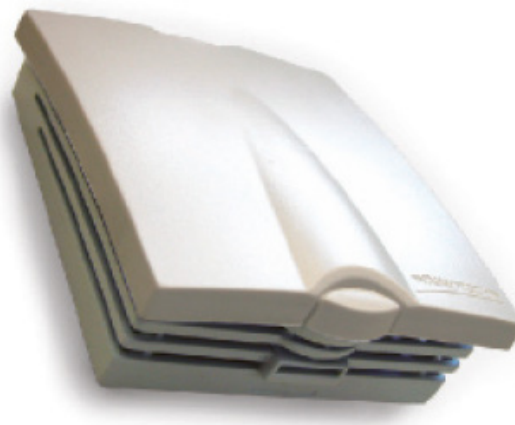
**Wiring**

Shielded cable should be used. The shield should remain continuous from the detector to terminal 9 of the controller.

It is good practice to maintain at least 50 millimetres clearance between product wiring and power wiring.

**Approvals**

The Innotech ITW600x Detectors conform to the requirements for RCM labelling.

**Applications**

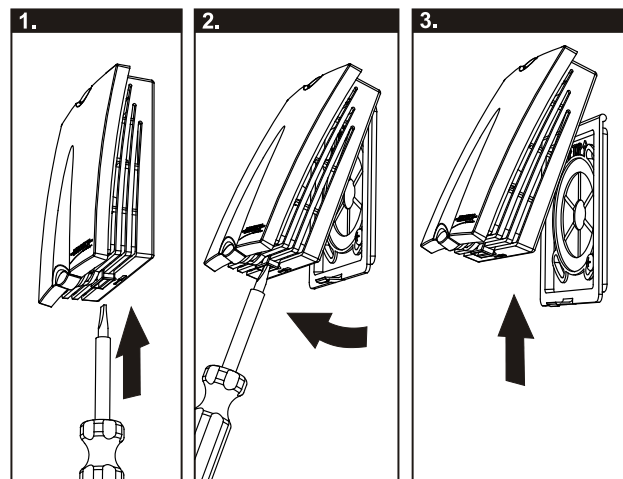
The ITW600x range of wall mounted current loop temperature detectors are designed for use with the Innotech ITC, IPC, IMC, IDC, IAP, IDS52 and Genesis range of controllers.

**Features**

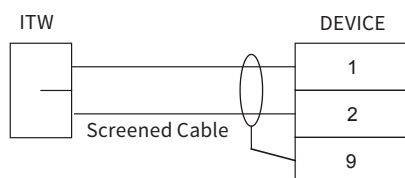
- Attractively styled low profile case blends with any decor
- Cover secured by positive locking clip
- No unsightly screws
- Current loop operation eliminates problems associated with voltage drop in connecting cables
- Output is linear over full operating temperature range
- Individually factory calibrated
- Detectors are interchangeable
- Not polarity conscious

**Removing The Cover**

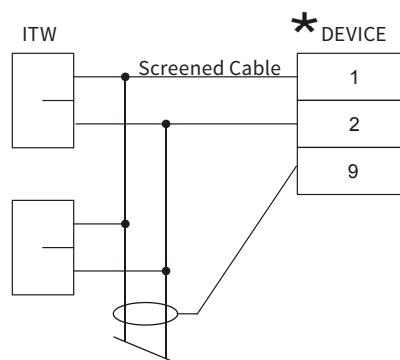
1. Insert a screwdriver into the protruding screwdriver slot on the bottom of the case, gently pushing to disengage the clip
2. Gripping the lower sides of the case, pivot the bottom of the case from the wall
3. Gently push the case up. It should easily become free of the base plate



### STANDARD Connection

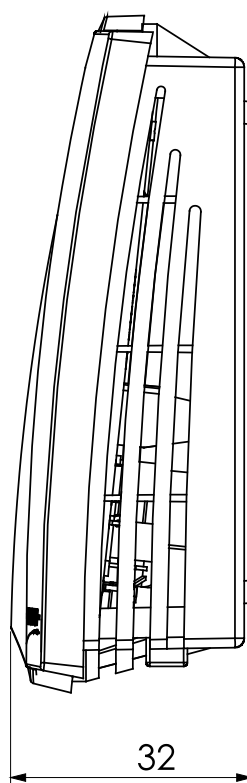
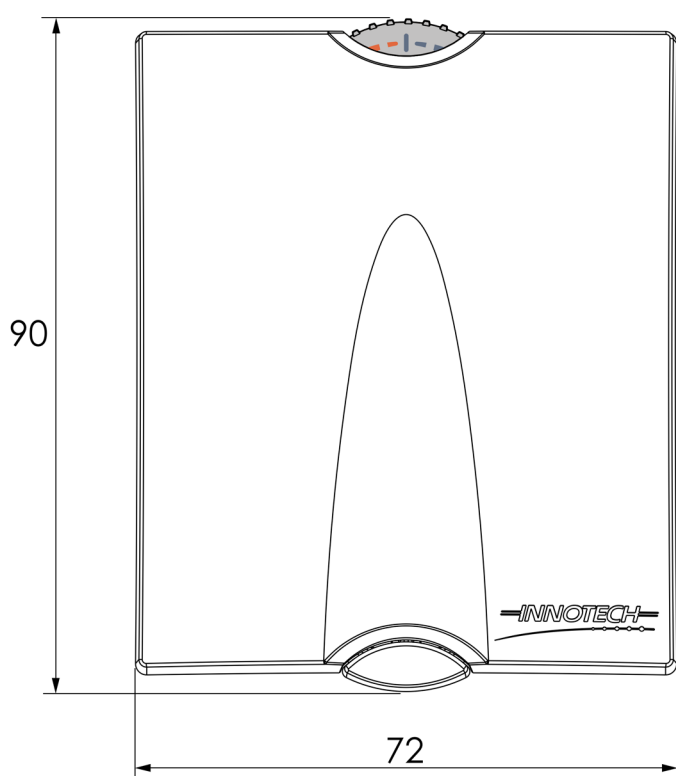


### AVERAGING Connection



\* Controller requires factory modification for use with averaging connection.

### Dimensional Diagram



# INNOTECH®

Australian Owned, Designed & Manufactured  
by Mass Electronics Brisbane

Phone: +61 7 3421 9100 Fax: +61 7 3421 9101  
Email: [sales@innotech.com.au](mailto:sales@innotech.com.au) [www.innotech.com.au](http://www.innotech.com.au)

YOUR DISTRIBUTOR