

MODEL:

IRA6001: Remote Adjuster for use with ITC and IPC
IRA6002: Remote Adjuster for use with IMC Controllers only
IRA6003: Remote Adjuster for use with IMT

IRA600x**Wall Mounted Remote Adjusters****Specifications****Temperature ratings**

- Storage: 0 to 50°C non condensing
- Operating: 0 to 50°C non condensing

Enclosure


The IRA600x products are housed in a stylish rectangular case suitable for wall mounting. The housing is moulded from flame retardant plastics recognised by UL as UL94-V0.


Colour: White/light grey

Dimensions: 91mm(h) x 72mm(w) x 32mm(d)

Installation

1. Mount the base to the wall with four screws through the holes provided in the base of the case.

 Ensure that the word "TOP" is to the top.

 Innotech® can supply an adapter plate suited for retrofitting previous versions of the Innotech Wall Mounted Temperature Detector range. Contact your Innotech distributor for more information.

2. Wire in accordance with Innotech connection diagrams and local bylaws or refer to your local distributor.
3. Fit the cover by placing the top edge of the cover over the tabs on the top of the base and then pressing the bottom middle of the cover to the wall. A firm click indicates that the cover is securely fixed.

Wiring

Shielded cable should be used. The shield should remain continuous from the IRA600x to Terminal 9 of the ITC, IMC and IPC controller, or Terminal 0V of the IMT controller.

It is good practice to maintain at least 50mm clearance between product wiring and power wiring.

Approvals

The Innotech IRA600x Detectors conform to the requirements for RCM labelling.

**Applications**

The IRA6001 Remote Adjuster is designed to provide an unscaled means to remotely offset the Set Point of the Innotech range of ITC and IPC controllers, or Full Remote Set Point for IMT Series.

The IRA6002 Remote Adjuster is designed to provide an unscaled means to remotely offset the Set Point of the Innotech range of IMC temperature controllers.

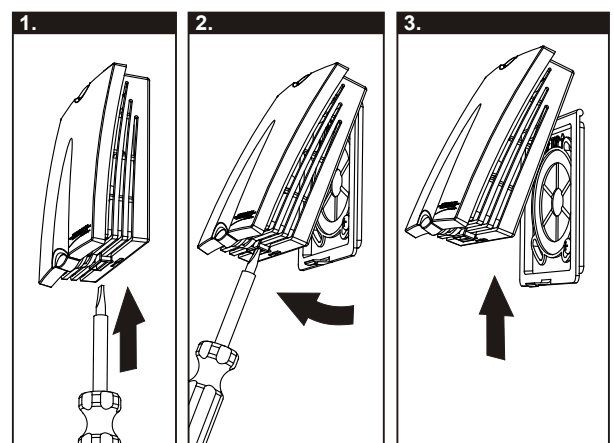
The IRA6003 Remote Adjuster is designed to provide an unscaled means to remotely offset the Innotech range of IMT controllers.

Features

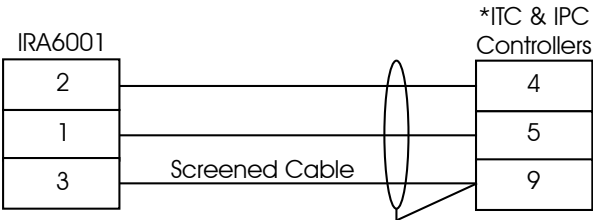
- Attractively styled low profile case blends with any decor
- Cover secured by positive locking clips
- No unsightly screws

Removing The Cover

1. Insert a screwdriver into the protruding screwdriver slot on the bottom of the case, gently pushing to disengage the clip.
2. Gripping the lower sides of the case, pivot the bottom of the case from the wall.
3. Gently push the case up. It should easily become free of the base plate.

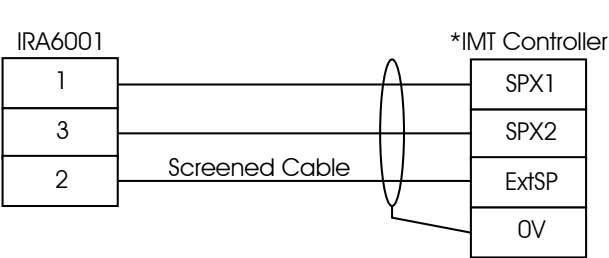


Standard Connection
 IRA6001



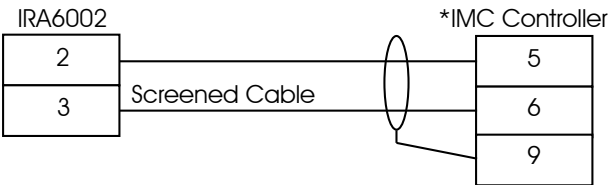
* Controller requires factory modification
 for use with remote adjuster.

Full Remote Setpoint
 IRA6001



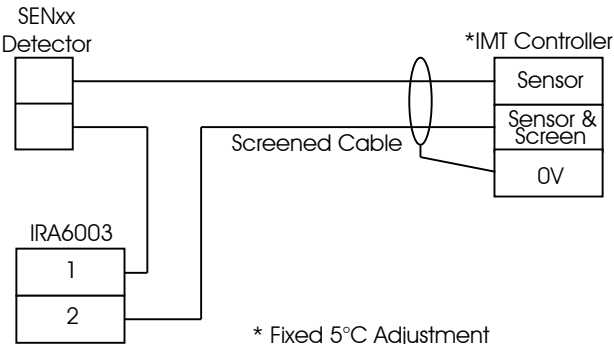
* Fixed 10 to 30°C adjustment

Standard Connection
 IRA6002



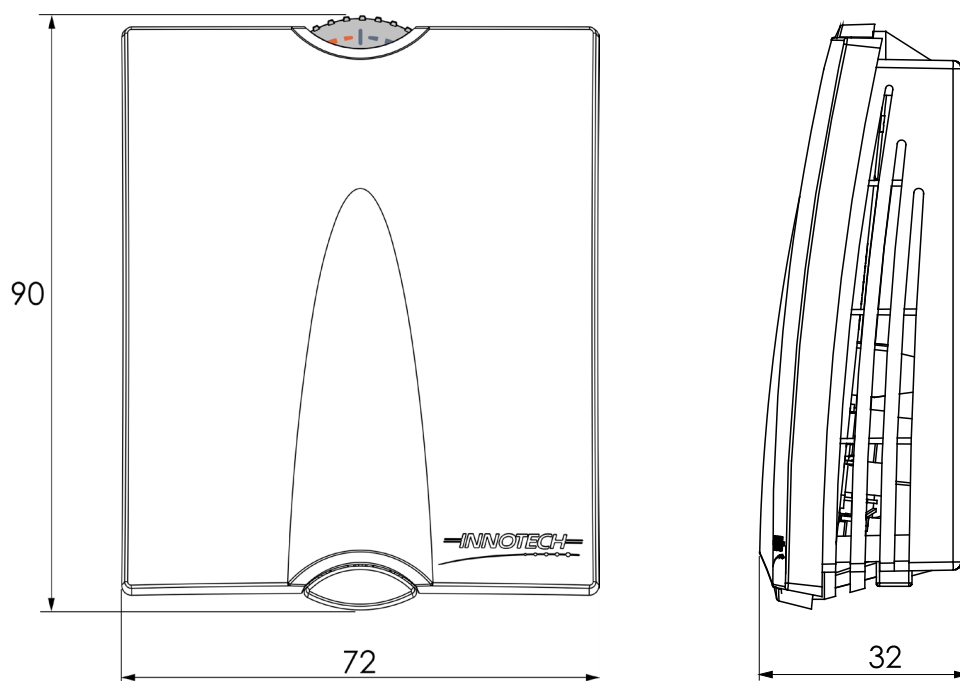
* Controller requires factory modification
 for use with remote adjuster.

Standard Connection
 IRA6003



* Fixed 5°C Adjustment

IRA600x Dimensions



This page has been left intentionally blank.

INNOTECH®

Australian Owned, Designed & Manufactured
by Mass Electronics Brisbane

Phone: +61 7 3421 9100 **Fax:** +61 7 3421 9101
Email: sales@innotech.com.au www.innotech.com.au

YOUR DISTRIBUTOR