

MODEL:

IMP6001: Standard Model

IMP6001**Wall Mounted Manual Positioner****Specifications****Power Supply**

Voltage: 24VAC $\pm 10\%$ @ 50/60Hz OR
24VDC $\pm 10\%$.

Power Consumption: 1VA max

Input

- One 0-10VDC Control Signal

Output

- One 0-10VDC Control Signal

Adjustment Range

- 0% to 100% by rotating dial

Terminal Identification

- | | |
|---|---|
| 1 | 0-10VDC Control Signal input |
| 2 | 0-10VDC Control Signal output into > 2k Ω load |
| 3 | Common and 0VAC supply |
| 4 | 24VAC supply. |

Temperature Ratings

- Storage: 0 to 50°C non condensing
- Operating: 0 to 50°C non condensing

Enclosure

The IMP6001 product is housed in a stylish rectangular case suitable for wall mounting. The housing is moulded from flame retardant plastics recognised by UL as UL94-V0.


Colour: White/light grey

Dimensions: 90 mm(h) x 72 mm(w) x 32 mm(d)

Installation

1. Mount the base to the wall with four screws through the holes provided in the base of the case.

 Ensure that the word "TOP" is to the top.

 Innotech[®] can supply an adapter plate suitable for retrofitting previous versions of the Innotech Wall Mounted Temperature Detector range. Contact your Innotech distributor for more information.

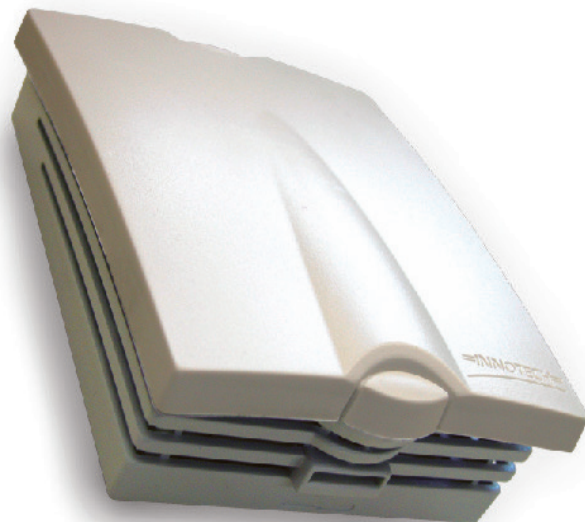
2. Wire in accordance with Innotech connection diagrams and local bylaws or refer to your local distributor.
3. Seal the hole in the wall after wiring to prevent errors in the measured temperature.
4. Fit the cover by placing the top edge of the cover over the tabs on the top of the base and then pressing the bottom middle of the cover to the wall. A firm click indicates that the cover is securely fixed.

Wiring

Shielded cable should be used. The shield should remain continuous from the IMP6001 to the connected device. It is good practice to maintain at least 50mm clearance between product wiring and power wiring.

Approvals

The Innotech IMP6001 conforms to the requirements for RCM labelling.

**Applications**

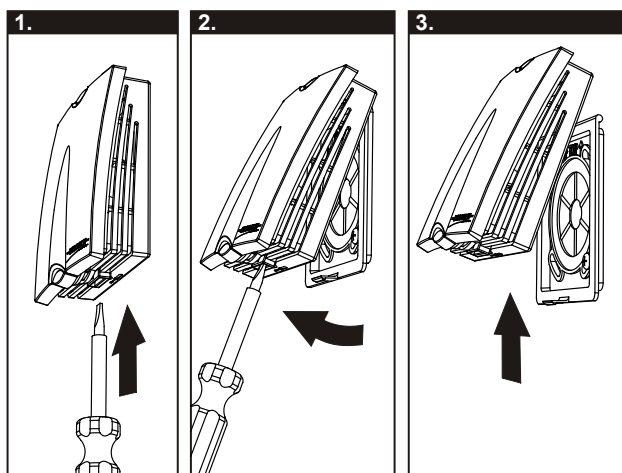
The IMP6001 manual positioner is designed to provide a means to manually position actuators or other devices which use a 0 to 10VDC Output Signal. If a Control Signal input is connected to terminal 1, the output will be the higher of the dial setting or the input from terminal 1.

Features

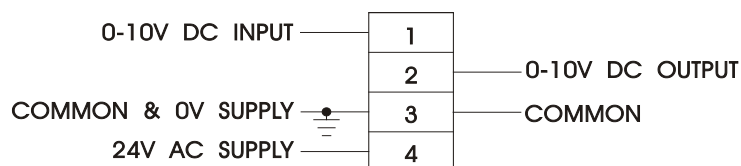
- Manually set override of minimum position
- Attractively styled low profile case blends with any decor
- Cover secured by positive locking clips
- No unsightly screws

Removing The Cover

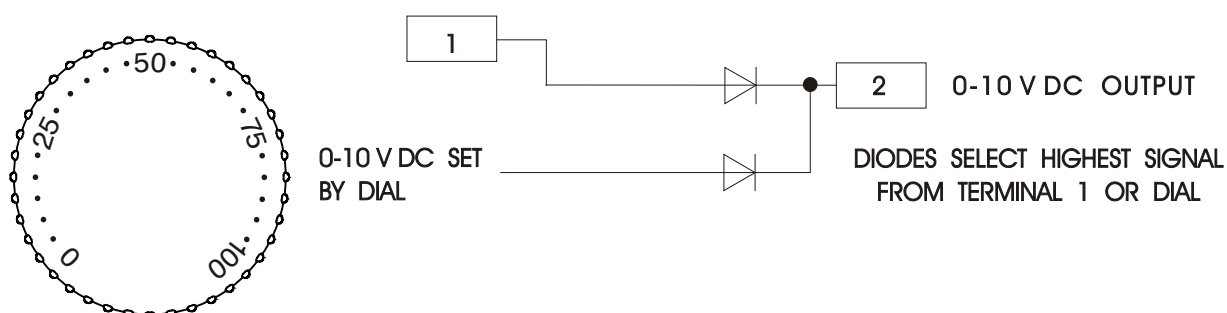
1. Insert a screwdriver into the protruding screwdriver slot on the bottom of the case, gently pushing to disengage the clip.
2. Gripping the lower sides of the case, pivot the bottom of the case from the wall.
3. Gently push the case up. It should easily become free of the base plate.



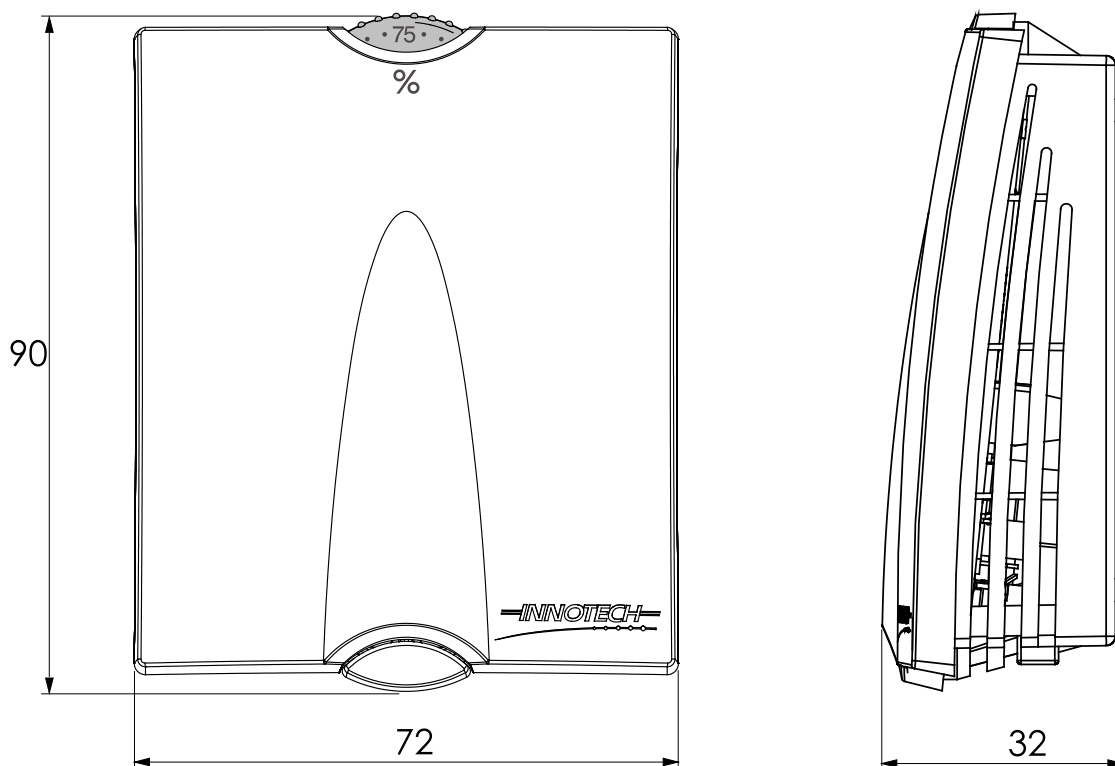
CONNECTION DIAGRAM



OPERATION OF IMP6001



DIMENSIONAL DIAGRAM



INNOTECH®

Australian Owned, Designed & Manufactured
by Mass Electronics Brisbane

Phone: +61 7 3421 9100 Fax: +61 7 3421 9101
Email: sales@innotech.com.au www.innotech.com.au

YOUR DISTRIBUTOR