

### Overview

**iComm** is the communications server used by application software to communicate with Innotech® digital controllers. It supports multiple concurrent applications communicating with multiple servers and device networks. **iComm** is the communications hub of any HMI-integrated device network.

**iComm** allows communications to Innotech devices via Serial, USB, TCP/IP and more. Additionally, iComm provides BACnet support for both Innotech and 3rd party devices.

**iComm** allows numerous applications to be connected simultaneously with support for hundreds of devices and thousands of points.

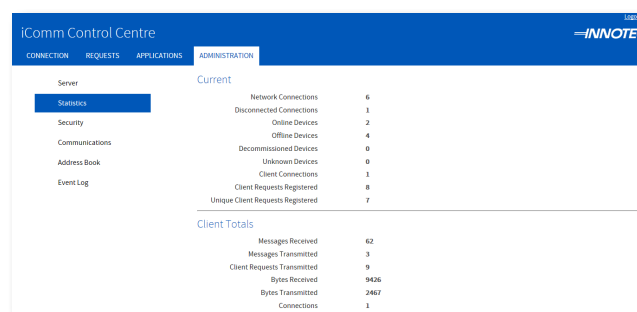
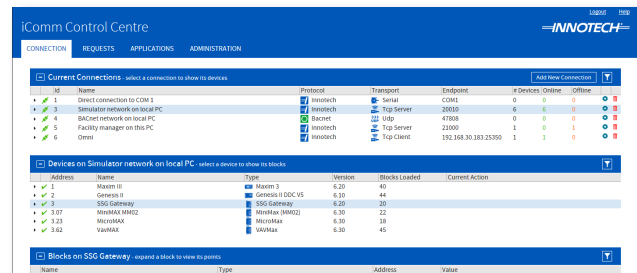
**iComm** is a Windows Service application with a user interface launched in a compatible web browser. The interface is accessible locally or from a remote location and allows the user to analyse usage, traffic and communications activity in real-time.

### Features

- New interface is compatible with most browsers and tablets
- Supports BACnet addresses 0 to 4,194,302
- Integrated browser-based help
- Robust and efficient construction using the latest multi-threaded programming techniques
- Multiple concurrent application connections supported
- Multiple concurrent network connections serviced
- Set a custom Write Priority for BACnet connections
- Detailed listing of all registered services with accurate status information
- Listing of devices available for a specific connection
- Consolidated listing of requests for values from all applications
- Detailed Event Logging to window with exporting
- Points list exporting to CSV
- Display of currently-connected applications with their IP address and name
- Statistics page showing bytes of network traffic to and from server
- User login authentication
- Supports multiple concurrent remote users
- Supports multiple protocols for device connection

### Applications

- All Innotech programs that communicate with Innotech digital controllers require iComm



### Specifications

#### Supported Operating Systems:

- Windows® 10 Professional 64-bit & 32-bit
- Windows® Server 2019
- Windows® Server 2016

#### Minimum System Requirements:

- Windows computer with Intel® Pentium® 2.8GHz dual core processor or equivalent
- 4GB of RAM
- 1GB Hard Disk Drive space required
- 1024x768 resolution Display (1920x1080 recommended)
- CD-ROM or DVD-ROM drive
- Keyboard and Microsoft® mouse or compatible pointing device
- Microsoft Internet Explorer®, Google Chrome® on computer or Chrome / Apple Safari® on tablet

- While iComm may run acceptably using the minimum system requirements stated above, when using BACnet communications it is recommended that a computer with a later CPU and more RAM be used to limit any data loss that may occur on older systems.
- iComm must be installed with Administrator rights. Right click the setup file and select 'Run as administrator' to install.

**i** Windows 10 builds are supported for approximately 18 months after release. It is recommended that you should upgrade your operating system if using an unsupported build.

This page has been left intentionally blank.



Australian Owned, Designed & Manufactured  
by Mass Electronics Brisbane

@ [sales@innotech.com](mailto:sales@innotech.com)

 [www.innotech.com](http://www.innotech.com)

 +61 7 3421 9100

© MASS ELECTRONICS Pty Ltd 2015

---

INNOTECH and the INNOTECH logo are registered and unregistered trademarks of Mass Electronics Pty Ltd in Australia, the USA and other countries.